

# National Highways

## A14 Junction 47a - 49

### Stakeholder newsletter

### Welcome to the August edition of the A14 junction 47a Haughley to junction 49 Tothill concrete road reconstruction newsletter.

In this issue we provide an update on the work we've recently completed and what we're doing next.

### Our progress so far?

We've made good progress on reconstructing lane 1 in the last month.

We've completed work to repair the existing drainage on the verge and install new drainage at the edge of the road.

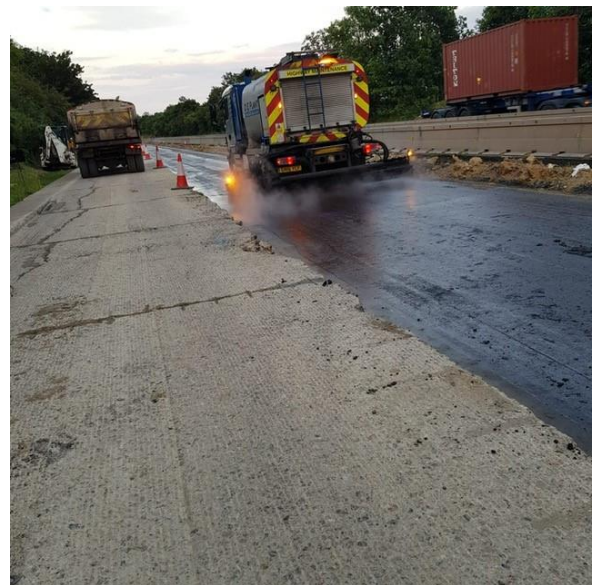
All the excess soil in lane 1 has been removed and we've started laying the first sublayer of strengthened material for the new road foundation.



### What's next

Once the foundation work is complete on lane 1 we'll then start resurfacing both lanes on the eastbound carriageway with asphalt (Blacktop).

This will provide a safer, smoother road surface that will be quieter for both the road user and those residents living in the nearby communities.



Once the resurfacing is complete, we'll install new kerbs and steel central reservation barriers and add temporary lining in preparation for moving the traffic to the eastbound carriageway, so we can start reconstructing the westbound carriageway.

## Customer Survey

Thank you to everyone who responded to the survey.

We value the feedback provided and will be discussing the suggestions made in detail with the project team and Suffolk County Council.



### Rat running

Some road users are continuing to use local roads to shorten their journeys, which includes Heavy Goods Vehicles (HGV's) travelling on roads with weight or width restrictions. Suffolk Constabulary has been out on various local routes to ensure existing restrictions on local roads are observed.

We'd like to reassure you; we're continuing to work with Suffolk County Council to look at alternative traffic calming measures that can be used on local roads to encourage drivers to stay on the A14.



### Keeping traffic moving

We understand road user and resident frustration with some of the traffic either straddling both lanes and driving alongside each other holding traffic up on the approach to the roadworks.

We've contacted the road haulage companies to ask their drivers not to block lanes by straddling two lanes.

We'll also be using various social media to reiterate to all drivers, they should be using both lanes to queue and then taking turns to merge into the single lane in a considerate way, as written in the Highway Code.

## Why is the work taking this long?

We're completely removing the old concrete material and reconstructing the road to a much greater depth - almost the same as when building a new road from scratch.

The first stage of these works involved breaking up the existing road and removing the concrete rubble before transporting it to our nearby compound. The concrete is being reprocessed by adding cement to make a new foundation material, which is being used to rebuild the road, before being resurfaced with four layers of a flexible asphalt road surface.

Because of the limited width available, we've decided to reconstruct one lane at a time on this scheme as this provides a sturdy lane to run all the heavy equipment on, and not on a newly laid compacted lane, which could be destructive.

This method is working very well.

## Short Messaging Service (SMS)



We hope you're aware of our SMS (Short Messaging Service) which issues text messages when there is an incident that will affect your journey on this stretch of the A14 during morning or evening peak-time travel.

If there is a breakdown or a collision in the roadworks, we'll quickly send a SMS message to you, so that you can plan your journey.

Sign up for this service by sending your mobile number to:

[ConcreteRoadsEastA14@nationalhighways.co.uk](mailto:ConcreteRoadsEastA14@nationalhighways.co.uk).

## Keep in touch

You can visit our webpage and sign up for updates about the scheme at

[www.nationalhighways.co.uk/A14Haughley](http://www.nationalhighways.co.uk/A14Haughley)

If you'd like more information about this work, then please call the 24/7 National Highways Customer Contact Centre on 0300 123 5000,  
email [info@nationalhighways.co.uk](mailto:info@nationalhighways.co.uk)



## Have a safe T.R.I.P this summer!

We want you to have a safe T.R.I.P. this summer.

Before setting off:

- Get a good night's sleep before your trip.
- Avoid alcohol the day before as this can disrupt sleep and affect your driving the following day.
- know what medications you're on and how they affect you.
- Avoid driving between midnight and 6am when you're likely to feel most tired.

### Top-up

fill up fuel, check your oil and screen-wash, ensure you're charged.

Before setting out, check your fuel levels and make sure you have enough to get to your destination. Or know where you can stop to fill up.



Check your oil level: use the dipstick to check and top up if required.

Check your screen wash is topped up so you can clear any debris or dirt off your windscreen and ensure you have good visibility.

### Rest

plan to take a break every two hours.

To enjoy a comfortable road trip, you should take a break for at least 15 minutes every two hours.



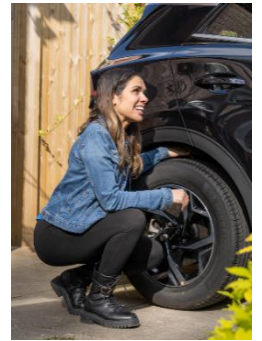
To prevent tiredness and stay alert consider stopping somewhere, you can go for a walk and get some fresh air. You can stop at a motorway services area or even have a picnic at a National Trust site or country park.

[Search for National Trust properties close to your route.](#)

## Inspect

your tyre tread and pressure.

In July and August 2022, our traffic officer patrols dealt with more than 21,000 breakdowns on motorways, with August seeing the highest number of breakdowns in the year. One in five of these was caused by poor tyre maintenance.



Give yourself time to check your tyre treads and get them replaced if there is less than 1.6mm of tread (the legal minimum). If you're stopped by the police and your tyre treads are less than 1.6mm you could face a £2,500 fine and three penalty points per tyre.

Before setting off, check your tyre pressures. If they're over- or under-inflated - even by as little as 10% - it can affect your car's performance, making it more dangerous when braking and steering.

You may need to inflate your tyres to a higher pressure if you have more luggage or passengers than normal.

## Prepare

for the weather.

Weather conditions can vary considerably throughout the year and can sometimes change at short notice.



To keep safe when travelling on our network, it's important to prepare for different weather types and understand how to adjust your driving for the conditions. Our advice pages will help you do this.

**You can find out more on our website using:**

[How-to-check-your-vehicle](#)