

A14 Haughley to Tothill Concrete Road reconstruction scheme newsletter

Preparation work for the A14 Haughley to Tothill reconstruction scheme started on 20 February 2023, ahead of us starting the first phase of our work in March replacing the old-style concrete road.

Why we are doing this work

The surface of concrete roads that were designed between the 1950s and 1970s have an average life span of 50 years. Their surfaces are now reaching the end of their serviceable life and need to be repaired or replaced.

We're working on our biggest ever programme to rebuild and revitalise our concrete roads in England. The first part of this programme invests £400 million between 2020 and 2025, as part of our five-year Strategic Business Plan maintaining and renewing the strategic road network.

Around half of the old-style concrete roads will either have repairs or will be replaced during the next five years. In fact, we previously made repairs to extend the lifespan of the concrete road surface on the A14 between junction 52 (Claydon) and junction 55 (Copdock Interchange) in both directions as part of the project to improve our concrete roads for the next decade.

Now we're fully reconstructing the A14 road between Junction 47a Haughley to Junction 49 Tothill. We'll be using new ways and new technology to provide a modern road that will last for decades to come. This will also make it easier and quicker for us to repair in future.

To find out more about our nationwide Concrete Roads work, please visit our programme page at www.nationalhighways.co.uk/concrete-roads where you can also [watch a video about this work](#).



What we're doing on the A14 now

We'll be digging out around 51,000 tonnes of concrete which will then be crushed and recycled to form the new road's foundations. This reduces our carbon footprint and is part of our commitment to sustainability.



To finish the road, we'll then lay a new and modern asphalt surface.

This will produce a safer, smoother, and quieter road benefiting road users and those living nearby.

The scheme is expected to be completed by summer 2024.

How we are doing this work

We'll be completely removing the old material and reconstructing the road to a much greater depth - almost the same as when building a new road from scratch.

Firstly, we will break up the existing road. We'll start on the eastbound carriageway.

We then remove the concrete rubble and transport it to our nearby compound. Here the concrete is reprocessed by adding cement to make a new foundation material.

When we rebuild the road, we cover the recycled foundations with a flexible asphalt road surface.

The new surfaces will last for up to 40 to 50 years and will be easier and quicker for us to repair in future.

You can also [watch a video](#) of the same type of work being done on the A11 road, which also has a concrete road surface which we're rebuilding.



Roadworks and road closures

Our main work is due to start later this month. Ahead of that, we'll need to have overnight road closures to allow us to begin installing the contraflow roadworks safely.

We'll at times be closing the A14 overnight between junctions 43 and 51 to through traffic from Monday 20 February until early April. The closures will be in place Monday to Friday, from 8pm until 6am each night.

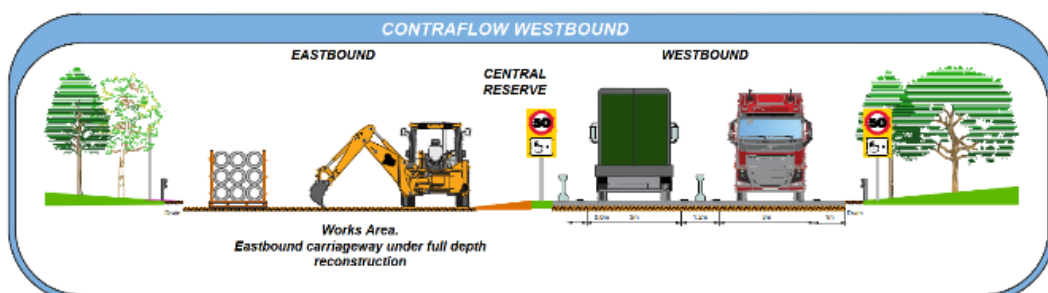
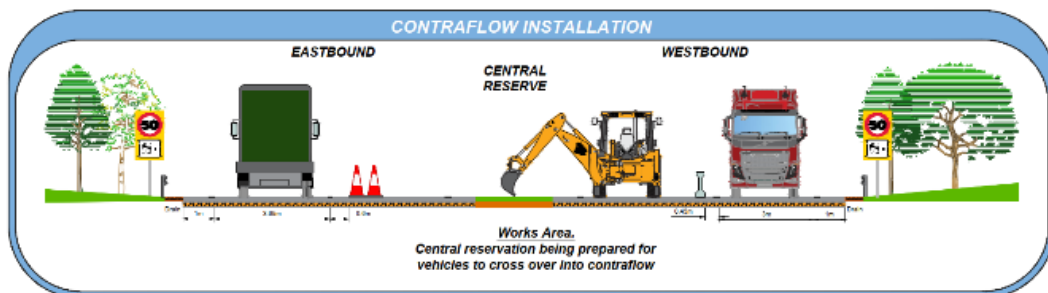
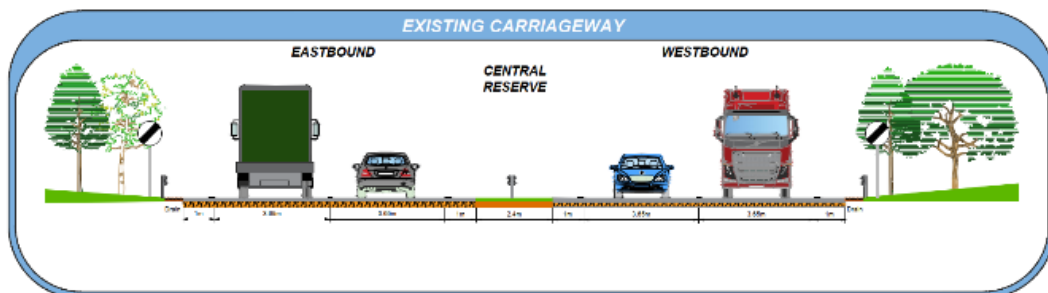
We'll be using contraflow roadworks throughout the construction of this scheme to help keep traffic moving. A contraflow is when the road is shut in one direction and traffic is moved over to drive on the opposite side of the road to share the remaining carriageway.

This allows the workforce to safely rebuild the road, whilst keeping traffic flowing. The road will be reduced from two lanes to one using a contraflow. The speed limit through the contraflow will be temporarily reduced to 50mph for the safety of our workers and motorists.

We know this may be challenging for commuters along the A14 and is having an impact on those living in the local area. Thank you for your patience while we install our contraflow roadworks.

Please note that these closures are subject to change at short notice due to unforeseen circumstances or poor weather conditions.

Please visit the project website at www.nationalhighways.co.uk/A14Haughley for the latest road closure dates.



Our diversion route

A fully signed diversion route will be in place overnight when the road is closed.

Some junctions will remain open for access by local traffic.

Long-distance eastbound traffic will be diverted to exit the A14 at junction 43, before taking the A143 towards Diss and then the A140 towards Ipswich to re-join the A14 at J51. Westbound traffic will follow this route in reverse.

We expect this diversion to increase journey times by up to 40 minutes. We're sorry for the disruption this may cause to your journey. Please plan ahead and allow extra time to your journey.

Keep in touch

You can visit our webpage and sign up for updates about the scheme at www.nationalhighways.co.uk/A14Haughley.

You can also sign up for SMS text messages via this website.

For any other questions, please call the 24/7 National Highways Customer Contact Centre on 0300 123 5000 or email info@nationalhighways.co.uk.

Thank you again for your patience and understanding as we improve this section of the A14.

