

CASE STUDY AECOM | 1.1b) – Jul22'- Sep22'

TA2 Framework - Suicide prevention in the construction industry

A63 Castle St – Assessing suicide prevention on the A63 Castle St Scheme

Introduction

A63 Castle Street scheme is currently at PCF Stage 6 construction phase. Throughout both the A63 Castle St scheme and the TA2 framework AECOM have been actively involved in raising awareness for suicide prevention over the last quarter, as well as reviewing as part of a wider collaborative team, including National Highways, suicide prevention on the footbridge structure constructed as part of the A63 Scheme; Porter Street Footbridge. Included within the photo section of this case study, there are extracts from the summary of the review of Porter Street bridge and a screenshot of the suicide prevention presentation held within the TA2 framework, showing Simon Long and Rob Price as attendees to this online teams presentation.



Overview

AECOM are aware of the issues around suicide, both in general life and looking into helping to prevent suicide on infrastructure construction.

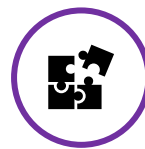
Suicide Prevention in the construction industry:

AECOM are joining organisations and communities all over the world in coming together to raise awareness. On average, one person dies by suicide every 40 seconds somewhere in the world. Men are twice as likely to be affected, and the construction industry reports a higher rate of deaths caused by suicide than any other industry.

Assessing Suicide prevention on the A63 Castle St Scheme:

A Structure constructed as part of the A63 Castle St. scheme was reviewed by a wider collaborative team, assessing if there are any further actions that can be taken to reduce the likelihood of member of the public climbing onto the top of the bridge, where falling/suicide is likely.

This case study will discuss these areas of suicide prevention, in the wider construction industry and scheme specific.



Challenges

- Ensuring all parties involved with the two meetings understood the seriousness of suicide prevention.
- Understanding how to ensure the correct actions were completed at design and construction stages to decrease the changes of suicide on structures.
- Providing employees within the construction industry the confidence to open up about their mental health and experiences with suicide and suicidal thoughts in their own lives
- Ensuring going forward that mental health and suicide prevention is to be considered throughout design and build, and that mental health is a part of standard Health and Safety in the work place for everyone, and it should be taken care of just as much as physical health.





Action Taken

Suicide Prevention throughout the construction industry: The AECOM team involved on the A63 agreed to take part in an online presentation with the main topic of suicide prevention. The presentation took place on the 9th of September – suicide prevention day, and was hosted by Emma Baker-Langman, the TA2 framework attended as well as Jacobs, WSP and National Highways. The session included a discussion about a close friend of Emma's who took his own life, a discussion about her own struggles with mental health and thoughts of suicide and finally two poems.

Assessing Suicide prevention on the A63 Castle St Scheme: The AECOM team involved on the A63 scheme took part in a collaborative site walkabout around and over the new Porter Street Footbridge with National Highways, Balfour Beatty, Arup and Hull City Council, to assess whether the relevant considerations were taken during design and construction to prevent climbing onto parts of the structure that may lead to pedestrians falling off or having the capability to take their own lives from height. The aimed outcome of the assessment was to see if there is any further actions that could be taken to decrease the risk of climbing and suicide across this structure.



Results

Suicide Prevention throughout the construction industry: Following the presentation held it gave the full TA2 framework team a deeper insight into how to be aware of people's well-being around us and how to offer help when required. The presentation was emotionally deep and really opened the eyes of everyone who contributed, it gave the audience a sense of ability to speak about their own mental health going forward, and the confidence to help others when they are in need. Suicide in the construction industry is something that is rarely spoken about, but this presentation opened up their conversation avenues, which might one day save the life of someone we work with.

Assessing Suicide prevention on the A63 Castle St Scheme: Following the walkover all parties in attendance agreed that throughout design and construction all has been done as far as reasonably practical to reduce the risk of individuals climbing onto the structure. Although it was noted that it is impossible to completely prevent a determined individual. It was also noted that there is high level CCTV of the structure, so any circumstances of climbing will be noticed, and the emergency services will be involved instantly to resolve the situation. Closing out this on-site meeting, all parties agreed to complete a similar assessment of the second bridge to be constructed next year; Mytongate Road Bridge.



Contact: 07425 334969
Name: Simon Long



Email:
Simon.long@aecom.com

home
safe
and well

Images

A63 Castle Street and A63 Princes Quay Bridge
On-site walkover
2 September 2022

Attendees

- **Elliot Harper (National Highways – Project Team)**
- Mark Sturdy-Bullock
- Richard Bogg
- **Martin Sunderland (National Highways – SES)**
- Andres Giannetti
- Sam Hotchkiss
- Nanje Ngoe
- Adam Lilley
- **Simon Long (AECOM DPM)**
- **David Wilkinson (AECOM PM & NEC3 Supervisor)**
- **Sonia Abascal Ruiz (AECOM)**
- Darren (Pre-Construction Manager)
- **Mark Bulmer (AECOM & Works Examiner)**

Two areas were covered:

1. Porter Street Footbridge (PSB)
2. Murdoch's Connection, aka Princes Quay Bridge, area (PQB)

Porter Street Footbridge

Primary Aim of walkover

For all parties to agree if relevant considerations to prevent climbing have been carried out throughout construction and design and to decide if any other actions or changes are required

Figure 1- Assessing Suicide prevention on the A63 Castle St Scheme: Onsite summary attendees and aim of walkover

Structure

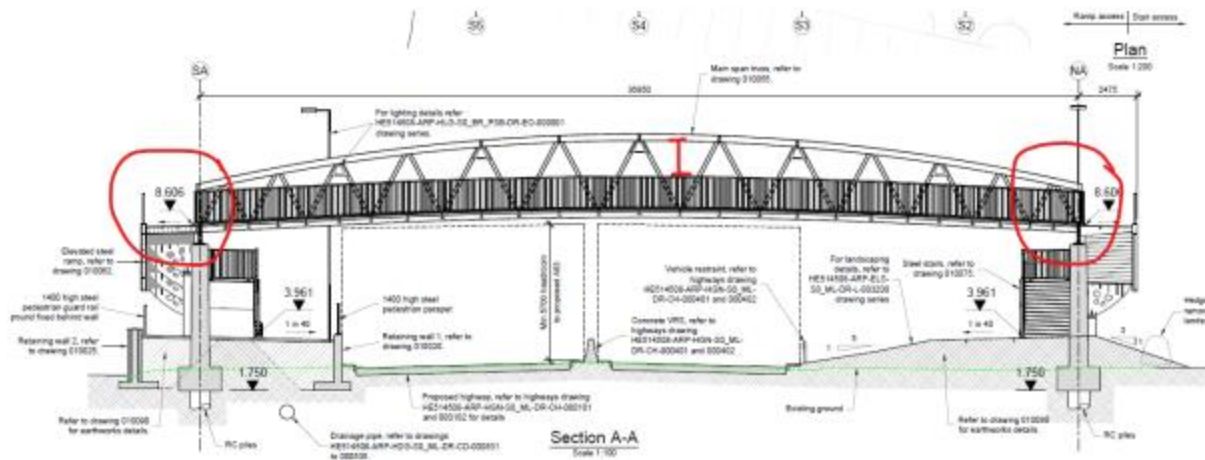


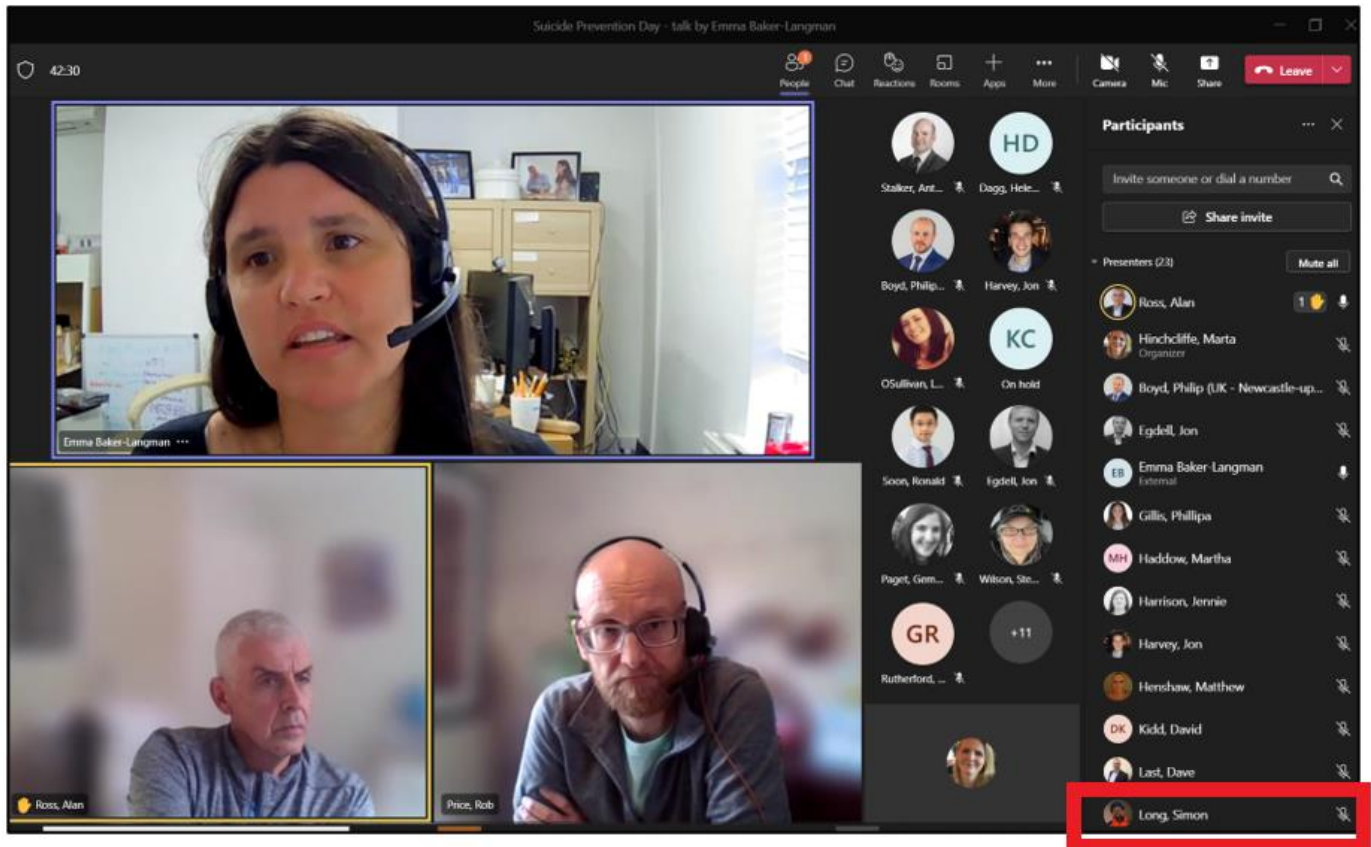
Figure 2 Drawing HE514508-ARP-SBR-S0_BR_PSB-DR-CB-010001

Figure 2 - Assessing Suicide prevention on the A63 Castle St Scheme: Identified locations for easy climbing



Figure 3 Image of PSB top of steps

Figure 3 - Assessing Suicide prevention on the A63 Castle St Scheme: Climbing route on structure



Emma's session was divided into three parts:

- She shared about her friend Nigel Clements and his suicide
- She shared about her struggles with mental health and suicide
- She shared two poems

Figure 4 - Suicide Prevention throughout the construction industry: Online Presentation with A63 Castle St Attendee