

## CASE STUDY AECOM | 1.1b) – Jan23'- Mar23'

### A63 Castle St – Safe Pedestrian Access onto Site.

## Introduction

A63 Castle Street scheme is currently at PCF Stage 6 construction phase. The AECOM team work on site full time, and have a requirement to travel to the site extents from the office on foot. At the start of 2023, the site had a large traffic switch resulting in the walking route to site changing significantly. To access the North side of the site now staff have to cross over the A63 and enter the site down a backstreet called Williams St. The walk from the office to site increased from about 5 minutes to 15/20 minutes with an increased section within public areas.



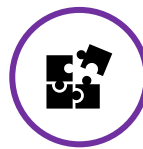
### Overview

AECOM are aware of the potential issues of working adjacent to public areas and coming into close contact with people who may live in these areas. The construction work may be seen as disruptive to their lives and may as a consequence be seen in a negative light.

The area in which office staff now had to walk through, after crossing the A63 using Porter St footbridge following the traffic switch, had recent reports of 'unsociable', 'unfriendly' and 'dangeous' behaviour towards site staff and other members of the general public. This area can be seen highlighted in orange in figures 1 & 2 below.

There were reports of people being attacked and having valuable possessions stolen. After hearing of these issues, AECOM were uncomfortable with our staff, and staff of other companies working on site, having to walk through these areas potentially alone, particularly during winter months with extended periods of darkness. AECOM decided to raise this issue and try and have the danger mitigated. Figure 3 is a screenshot of an observation raised by an AECOM employee, on the Contractorts observation app, after learning of the potential dangers of the area.

This case study will discuss this issue and how it was mitigate to ensure everyone walking to site could be kept as safe as possible and out of harms way.



### Challenges

- Ensuring all parties involved understood the seriousness of potential dangers to site staff who were attempting access the site.
- Ensure that a change was made to ensure staff did not have to walk through the potentially unsafe public area to access site.
- Ensuring that the mitigation method itself was also safe, and did not pose a threat to the general public or allow easy access onto site for members of the public.





## Action Taken

AECOM submitted the observation (figure 3). Following this AECOM spoke directly to the contractors H&S advisor, Site Manager and the Project Director, raising our serious concerns with evidence of why the concerns were valid. We then provided our ideas on alternative entrance points onto site, that would entirely remove the need for anyone working on site to walk through the area of concern/danger.



## Results

Following the submission of the observation and conversations held between AECOM, the Contractor and the client, the Project Director (contractor) approved an immediate additional entrance to be created onto site. The new entrance (which can be seen below in the annotated screenshots of site) was situated at the base of the ramp & stairs of the footbridge and was accessed through the use of a coded padlock. This new entrance was accompanied by a safe footpath within site that ensured safe passage of site attendees on foot to travel through the site safely and avoid any moving plant. This new entrance completely removed the need for any member of staff accessing site to have to walk through the area of danger/concern (orange boxes annotated on the screenshots below) and also did not pose any threat to the general public or provide additional opportunities for site incursions.

Since the implementation of the new entrance, there have been no reported incidents or concerns around accessing site on the north due to staff & public interface.



Contact: 07425 334969  
Name: Simon Long



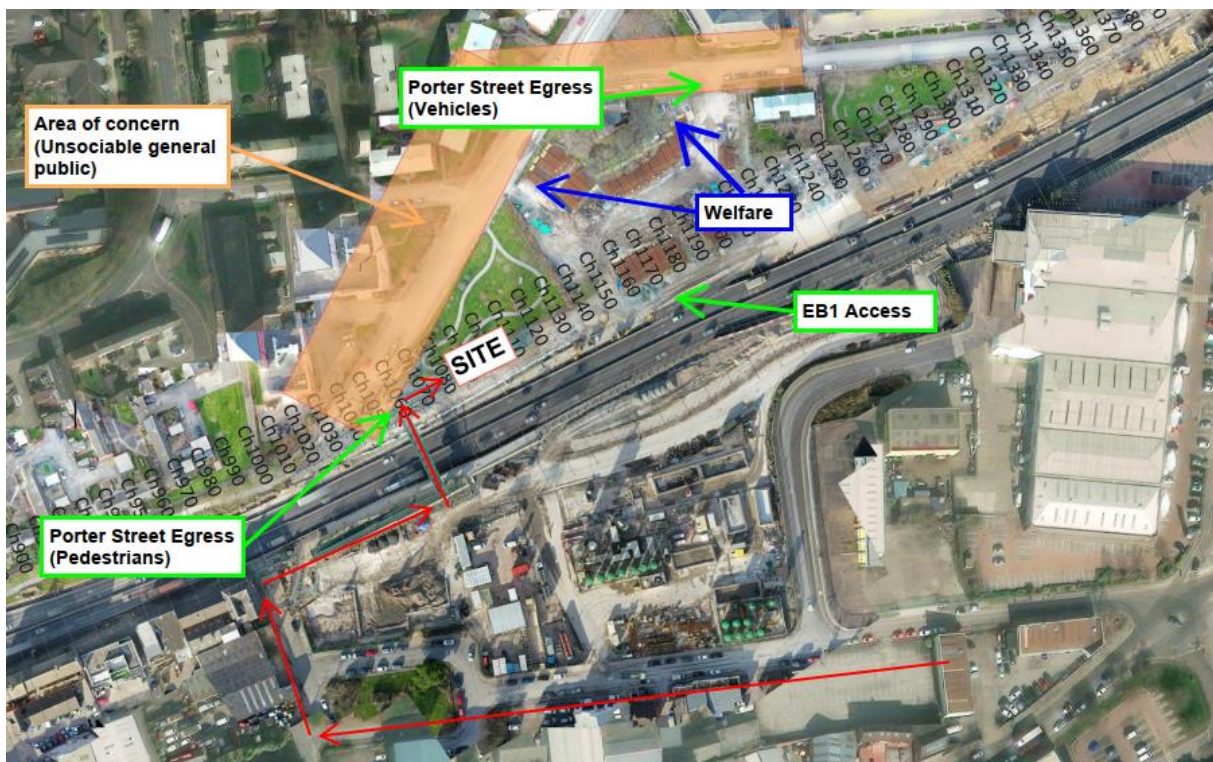
Email:  
Simon.long@aecom.com

home  
safe  
and well





**Figure 1- A63 North Side Site access footpath route (Prior to change)**



**Figure 2 - A63 North Side Site access footpath route (After the change)**

Observation ID: 1083372

Project: Major Projects > Highways > RIP > MHC01005 | A63 Castle Street, Hull - Phase 2 Construction (Highways SBU)

Click [here](#) to view the observation online.

Date	Time	Source	Risk Level
2023-01-28	15:52	Mobile	High
Anonymous?	Reported By	Reporter e-Mail	Manager e-Mail
No	Charlotte Sutherland	<a href="mailto:charlotte.sutherland@aecom.com">charlotte.sutherland@aecom.com</a>	<a href="mailto:david.j.wilkinson@aecom.com">david.j.wilkinson@aecom.com</a>
Request Feedback?	Resolved at Submission?	Location	Supplier
Yes	No	North Side of site	
What Did You See, What Could Have Happened?		What Did You Do?	
A round about 70 year old man was beaten up by a gang of youths on the north side on Friday afternoon. This is a health and safety issue with the possible danger when walking to and from the north side.		I was escorted by one of the BB men on the north site to PSFB walkway and was watched over the bridge to ensure safety to the South side.	

***Figure 3 – Safety Observation raised about the unsafe public area used to access site.***