

# Bridge strikes

Know your height and plan your route

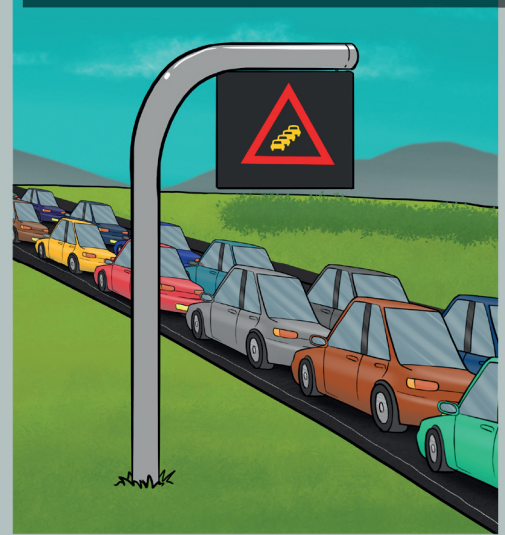
Bridge strikes  
can cause...



injury...



delays...

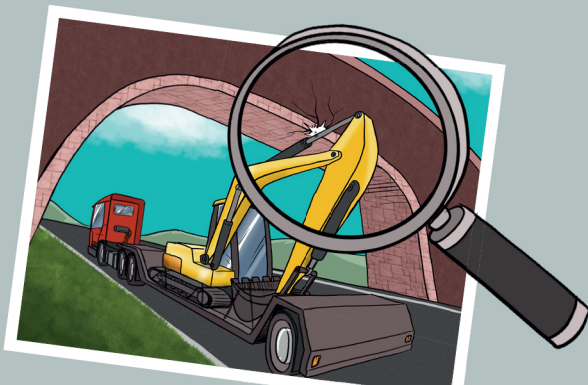


and damage



On average, there are  
three bridge strikes a  
month on our roads

A single bridge strike  
can cost up to £1.1m  
to repair



In the majority of cases it's  
the load being transported  
that strikes the bridge



In the last 10 years, three  
bridges have been damaged  
beyond repair on our roads

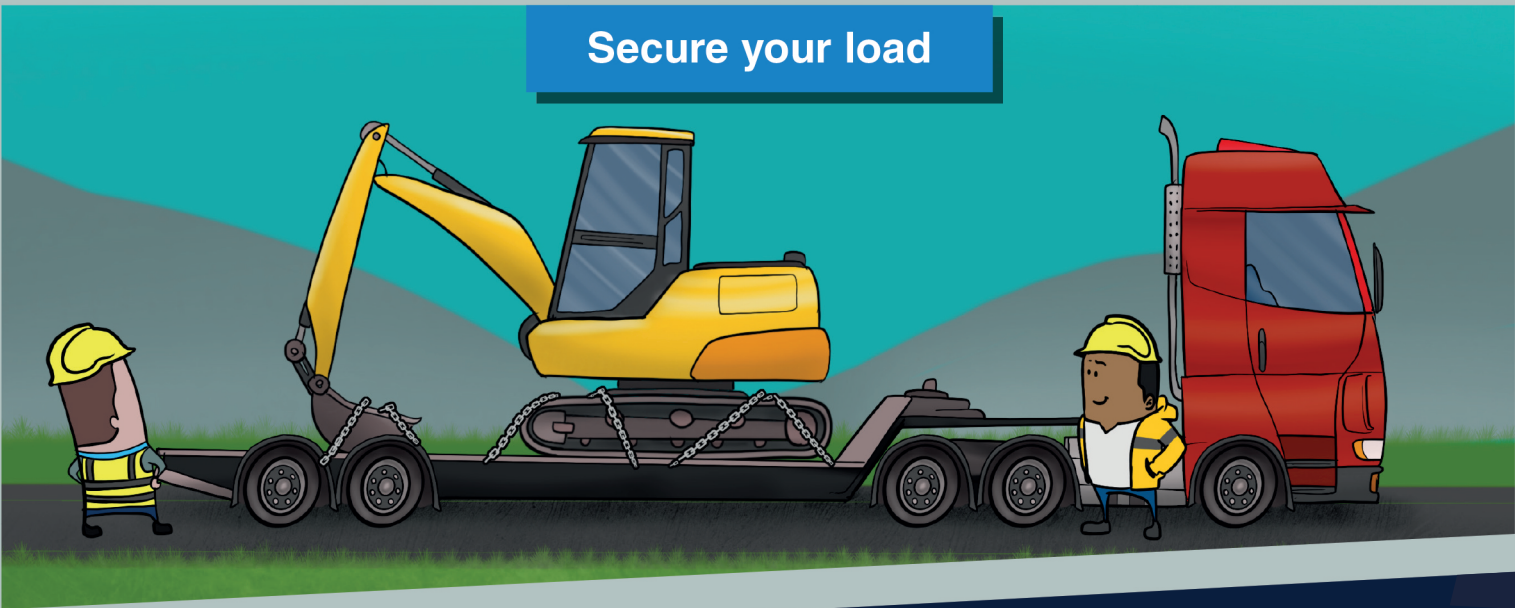
## Know your height



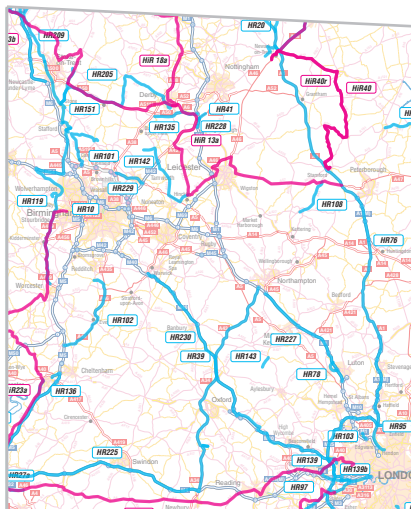
## Plan your route



## Secure your load



## Be informed



Scan QR code to see full extent of Abnormal load map

For more information on route planning and load security please use these search terms or scan the QR codes

'DfT load safety'



'Abnormal load map'



Working on behalf of National Highways