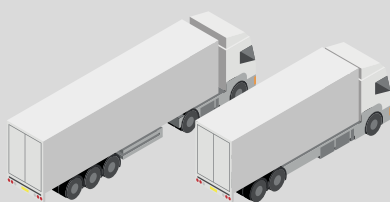


Road speed limits in MPH in England National speed limit www.gov.uk/speed-limits

Goods vehicles **more** than 7.5 tonnes maximum laden weight, articulated or has a trailer.



30

Built-up area

50

Single carriageway

60

Dual carriageway

60

Motorway

Goods vehicles **not** more than 7.5 tonnes maximum laden weight.



30

Built-up area

50

Single carriageway

60

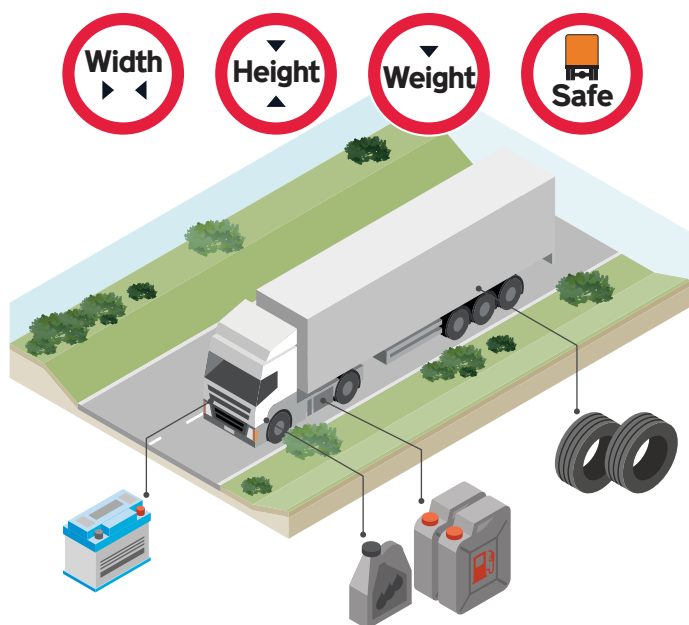
Dual carriageway

70

Motorway

Some of the checks required before you set off

www.gov.uk/guidance/carry-out-daily-heavy-goods-vehicle-hgv-walkaround-checks



Speed conversion

| | | | | | | |
|-----|-----------|-----------|-----------|-----------|-----------|------------|
| MPH | 20 | 30 | 40 | 50 | 60 | 70 |
| KPH | 32 | 48 | 64 | 80 | 96 | 112 |

Height conversion

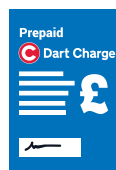
| | | | | |
|---------------|--------------|--------------|--------------|--------------|
| Feet - inches | 16'5" | 14'9" | 13'1" | 11'6" |
| Metres | 5.0m | 4.5m | 4.0m | 3.5m |

Transport documents you will need

You need to have the right documents to enter the UK with your vehicle and load. Check with the authorities in your home country. For information on new rules 2021 visit www.gov.uk and search for 'new rules 2021'.



- ☒ Driving licence
- ☒ Green card
- ☒ Pay Levy

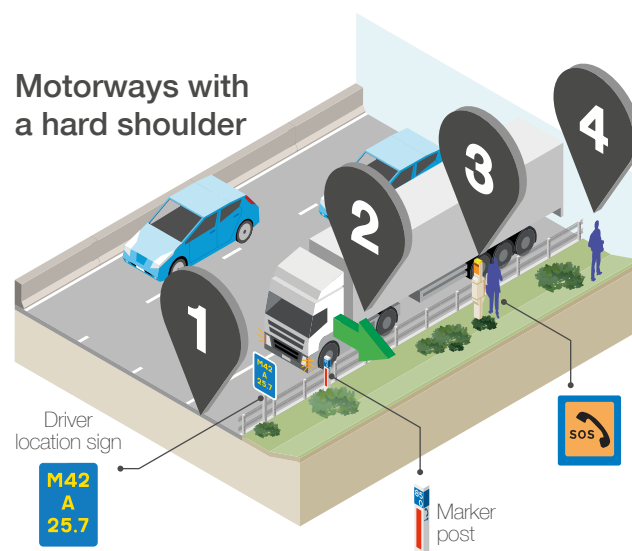
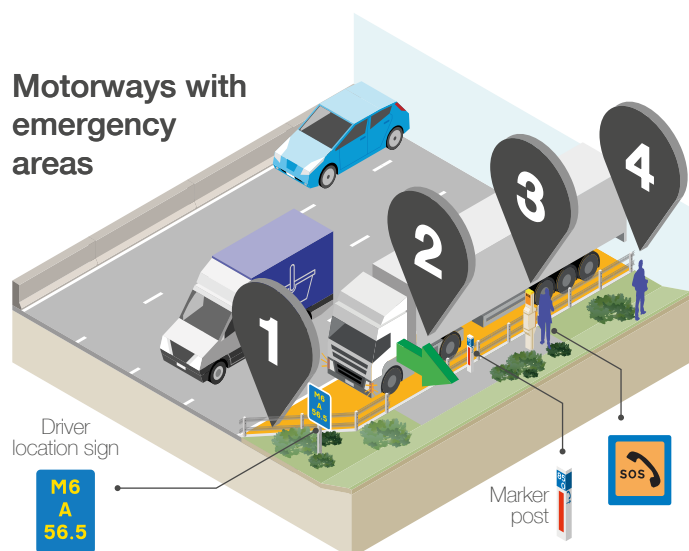


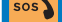
- ☒ Pre-pay travel charges
- ☒ Congestion charges
- ☒ Emission charges

For the legal minimum standard for driving in England: www.gov.uk/guidance/the-highway-code
For help call National Highways on (+44) 300 123 5000. In emergencies call 999

Breakdown and recovery

Most **breakdowns are preventable**. Check your vehicle before your journey and keep details of your breakdown recovery service provider with you. If your vehicle is **damaged or appears to have problems**, always try to get off the motorway quickly. If that's not possible, you should follow these steps:



- 1** Use an emergency area if you can reach one safely or use the hard shoulder if there is one. Turn on your hazard warning lights and other lights such as fog lights or side lights. **Do not put out a warning triangle**
 - 2** Exit your vehicle on the left side if possible and **stand behind the crash barrier**.
 - 3**  Call National Highways using the free phone provided. Alternatively, use a mobile phone and **call 0300 123 5000**. Use the marker posts so we can identify your location. We have an interpretation service available, if required.
 - 4** Keep clear of your vehicle and moving traffic at all times and **contact your breakdown recovery service provider**.

If it's not possible to exit your vehicle safely, there's no safe place to wait, or you feel your life is in danger, put your hazard warning lights on and stay in your vehicle with your seat belt on. **If you have a mobile phone, call the Police on 999 immediately.**



UK roundabouts: Go clockwise around roundabouts, give way to the right-hand side.



Take a break: Remember to take breaks, visit: www.gov.uk/drivers-hours/eu-rules



Be aware of your blind spots:
Scan this QR code for your quick
reference guide.

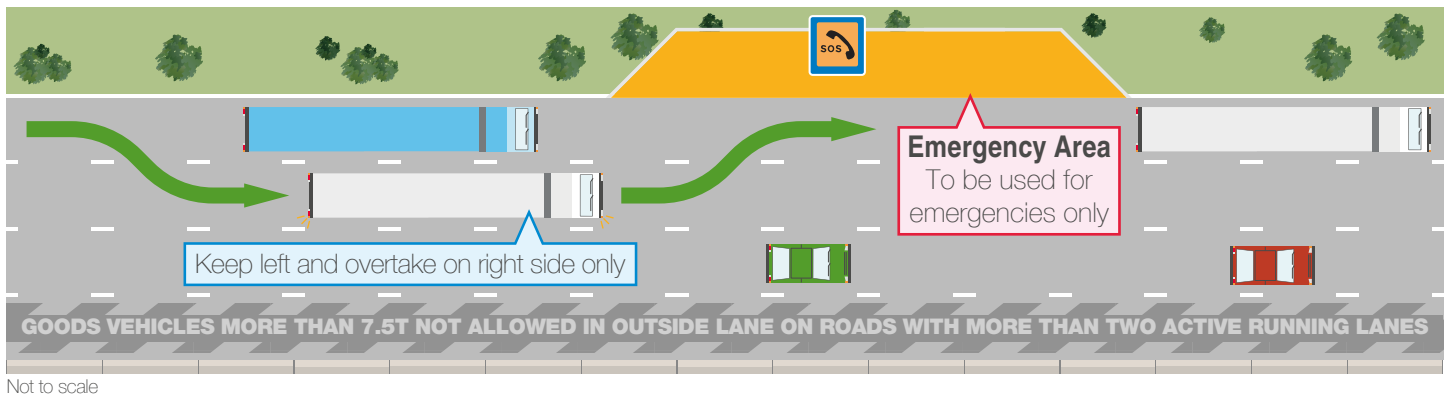
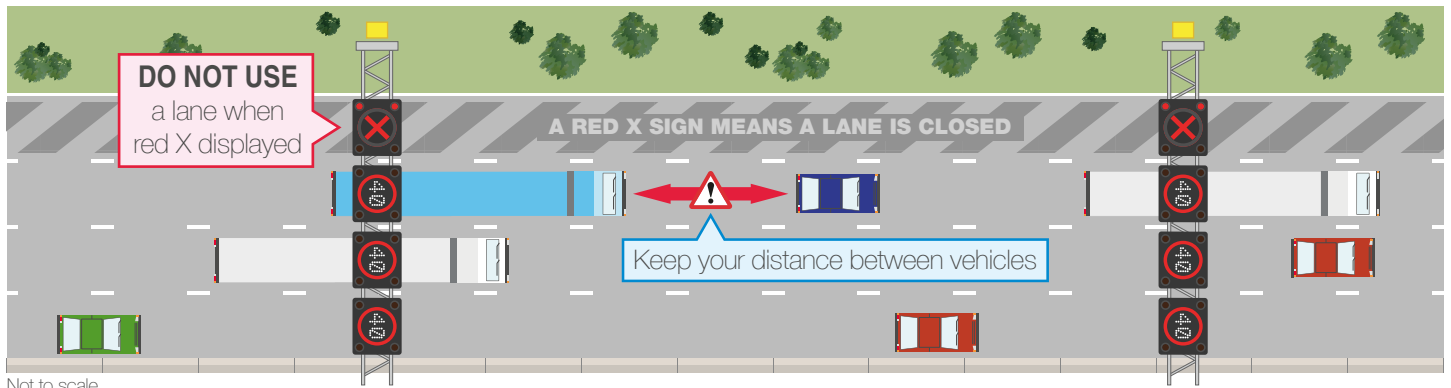


Park where you are allowed: In safe places such as truck stop service areas. **Do not park on a slip road or hard shoulder.**

For the legal minimum standard for driving in England: www.gov.uk/guidance/the-highway-code
For help call National Highways on (+44) 300 123 5000. In emergencies call 999

Be safe on our roads

For more information visit www.gov.uk/guidance/how-to-drive-on-a-smart-motorway



Traffic information



Register with Traffic England for roadwork information www.trafficengland.com. Our traffic officers support road users and keep them safe. When prompted, you must comply with their instruction.

Traffic management system in Kent - Operation Brock



In the event of disruption to services across the English Channel, a new concrete moveable barrier can be deployed using a specialist vehicle. The technology is designed to ensure that the M20 in Kent is kept open at times of disruption, whilst also allowing the motorway to retain three lanes, a hard shoulder and 70 mph speed limits in both directions during normal traffic conditions. This will help ensure goods can continue to flow in and out of the UK. Visit website for information on the M20 moveable barrier:

<https://nationalhighways.co.uk/our-work/south-east/m20-junction-8-to-9-moveable-barrier/>