

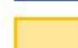

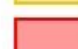

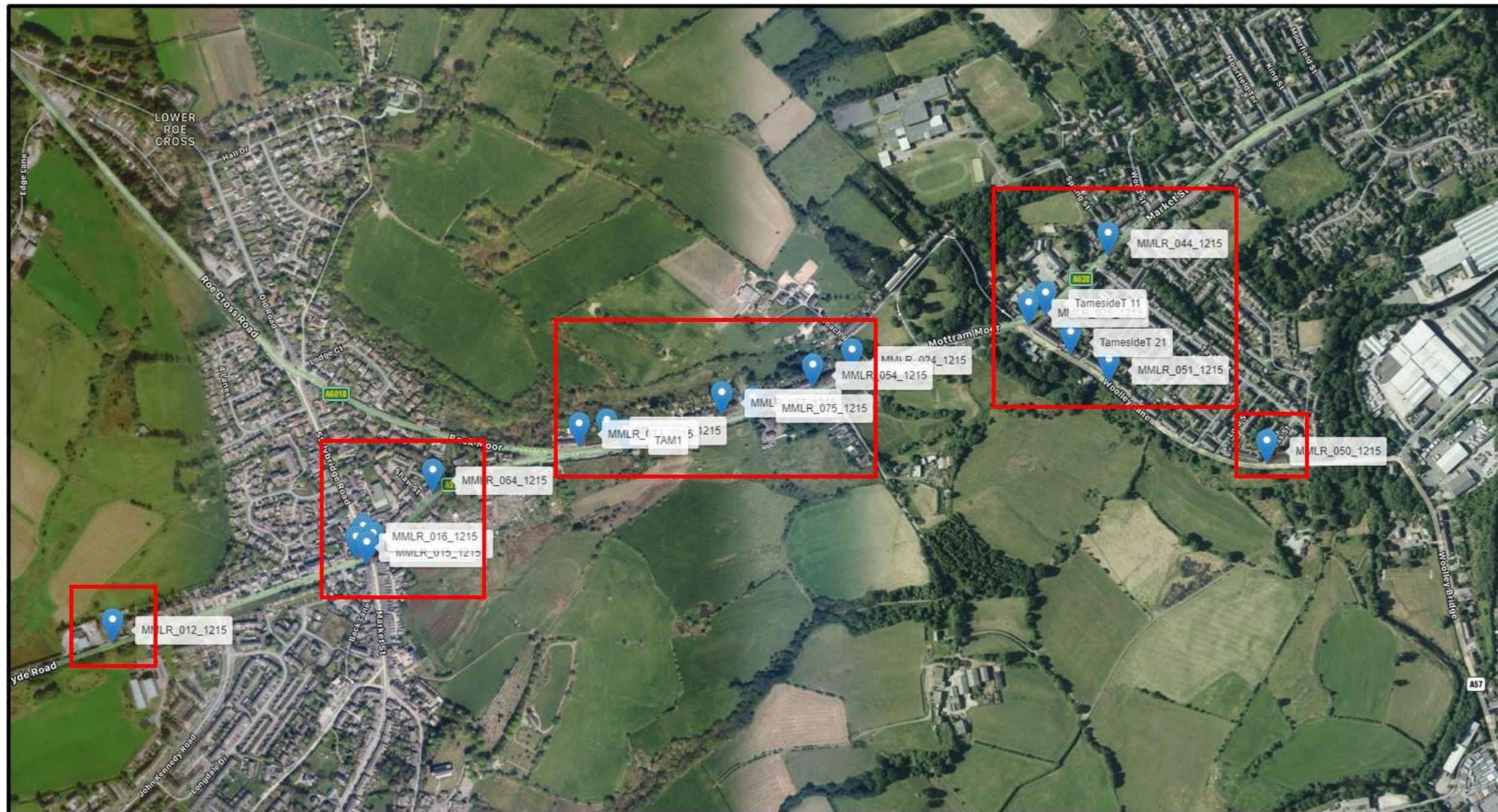


**KEY**


- |   |                                  |  |                                |
|---|----------------------------------|--|--------------------------------|
|  | Greater Manchester Agglomeration |  | PCM Road Census ID             |
|  | North West & Merseyside          |  | PCM Road Network               |
|  | East Midlands                    |   | PCM Road Link demarcation node |

**Figure B1**  
PCM Links and Air Quality  
Zones and Agglomerations



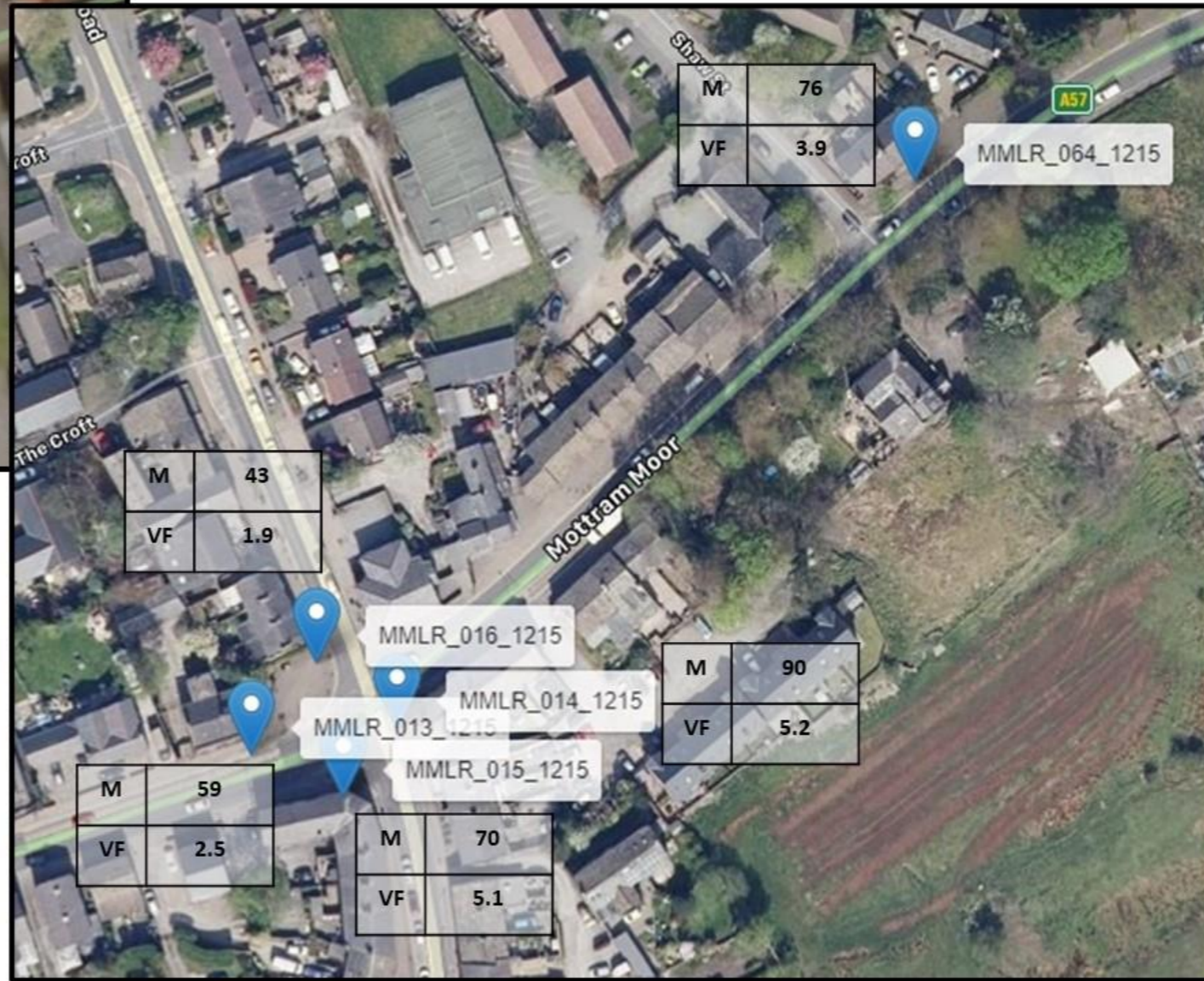
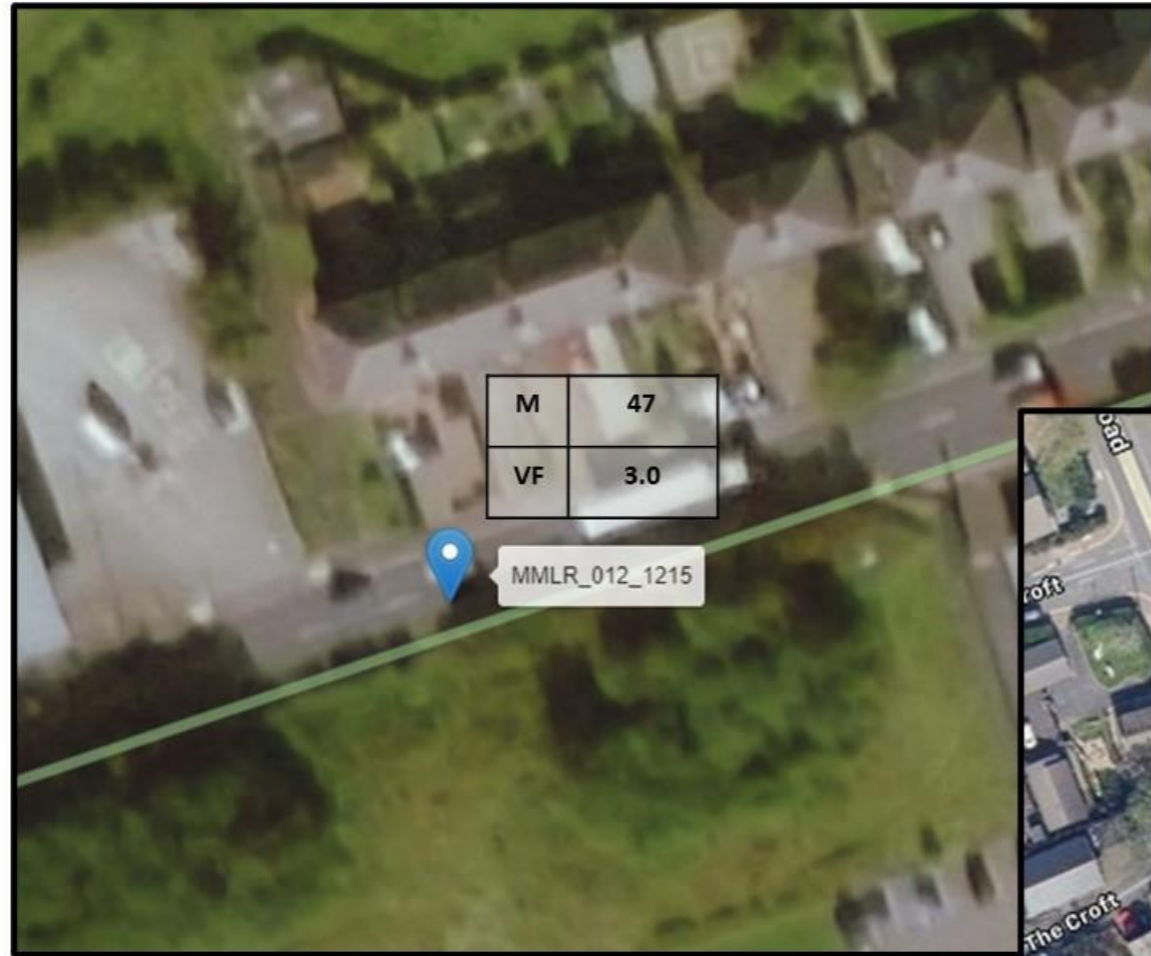


**KEY** Monitoring Site Details

 MMLR_012_1215 Sites Ref	<b>M</b>	<b>47</b>	2016 Monitored Nitrogen Dioxide Concentration ( $\mu\text{g}/\text{m}^3$ ) Road NOx Verification Factor
	<b>VF</b>	<b>2.61</b>	

**Figure B2**  
**Air Quality Monitoring**  
**Sheet 1 of 4**





**KEY** Monitoring Site Details

 MMLR\_012\_1215  
Sites Ref

M	47
VF	2.61

2016 Monitored Nitrogen Dioxide Concentration ( $\mu\text{g}/\text{m}^3$ )  
Road NOx Verification Factor

Figure B2  
Air Quality Monitoring  
Sheet 2 of 4





**KEY**

**Monitoring Site Details**

 MMLR\_012\_1215  
Sites Ref

M	47
VF	2.61

2016 Monitored Nitrogen Dioxide Concentration (µg/m³)  
Road NOx Verification Factor

**Figure B2**  
**Air Quality Monitoring**  
**Sheet 3 of 4**





**KEY**

**Monitoring Site Details**

 MMLR\_012\_1215  
Sites Ref

M	47
VF	2.61

2016 Monitored Nitrogen Dioxide Concentration ( $\mu\text{g}/\text{m}^3$ )  
Road NOx Verification Factor

**Figure B2**  
Air Quality Monitoring  
Sheet 4 of 4

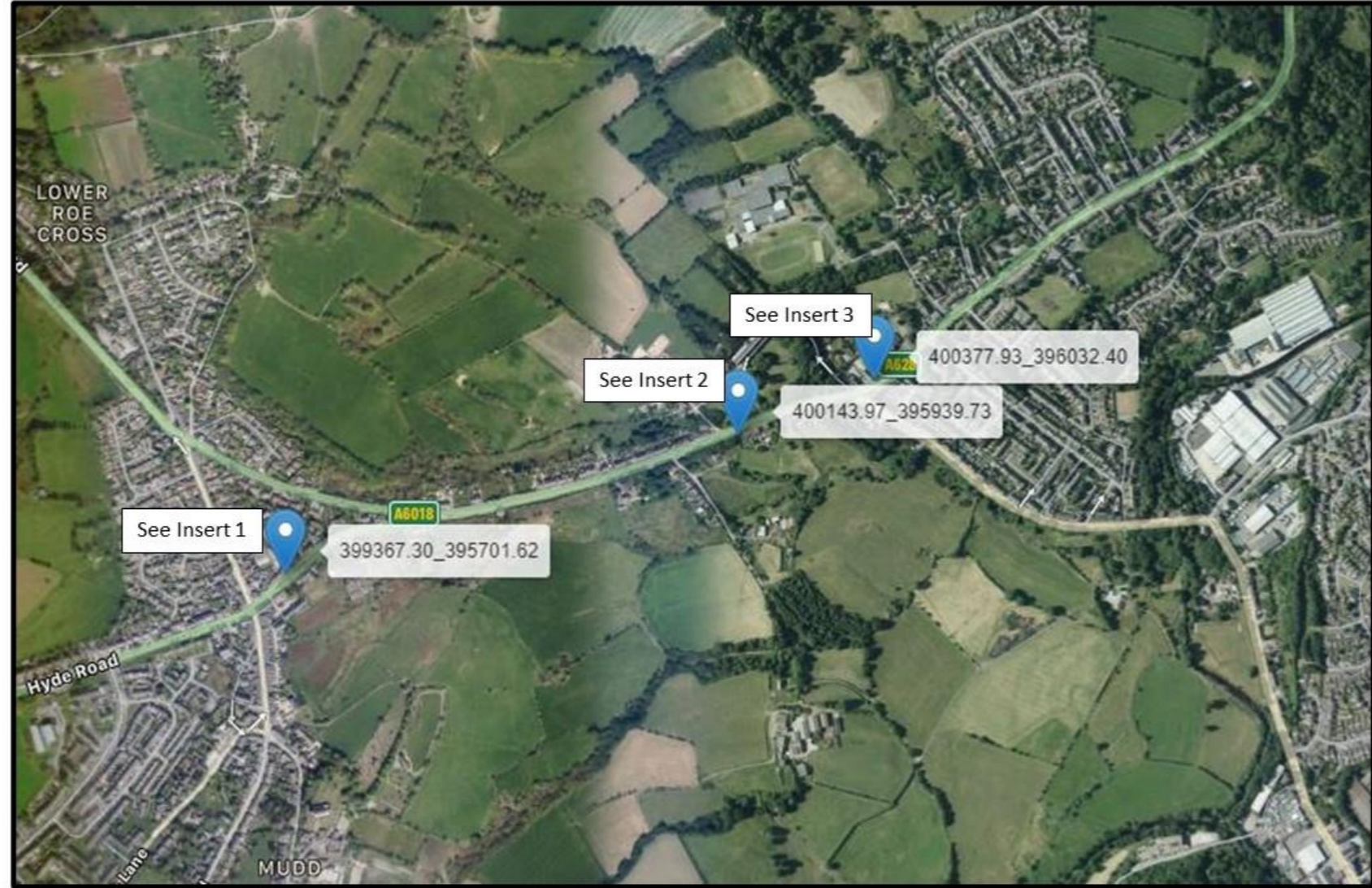




KEY	
	Verification Zone 1
	Verification Zone 2
	Verification Zone 3

Figure B3  
Air Quality Model Verification  
Zone





**KEY**

 399367\_395701 Modelling Receptor ID

**Figure B4**  
Air Quality Modelling  
Receptors