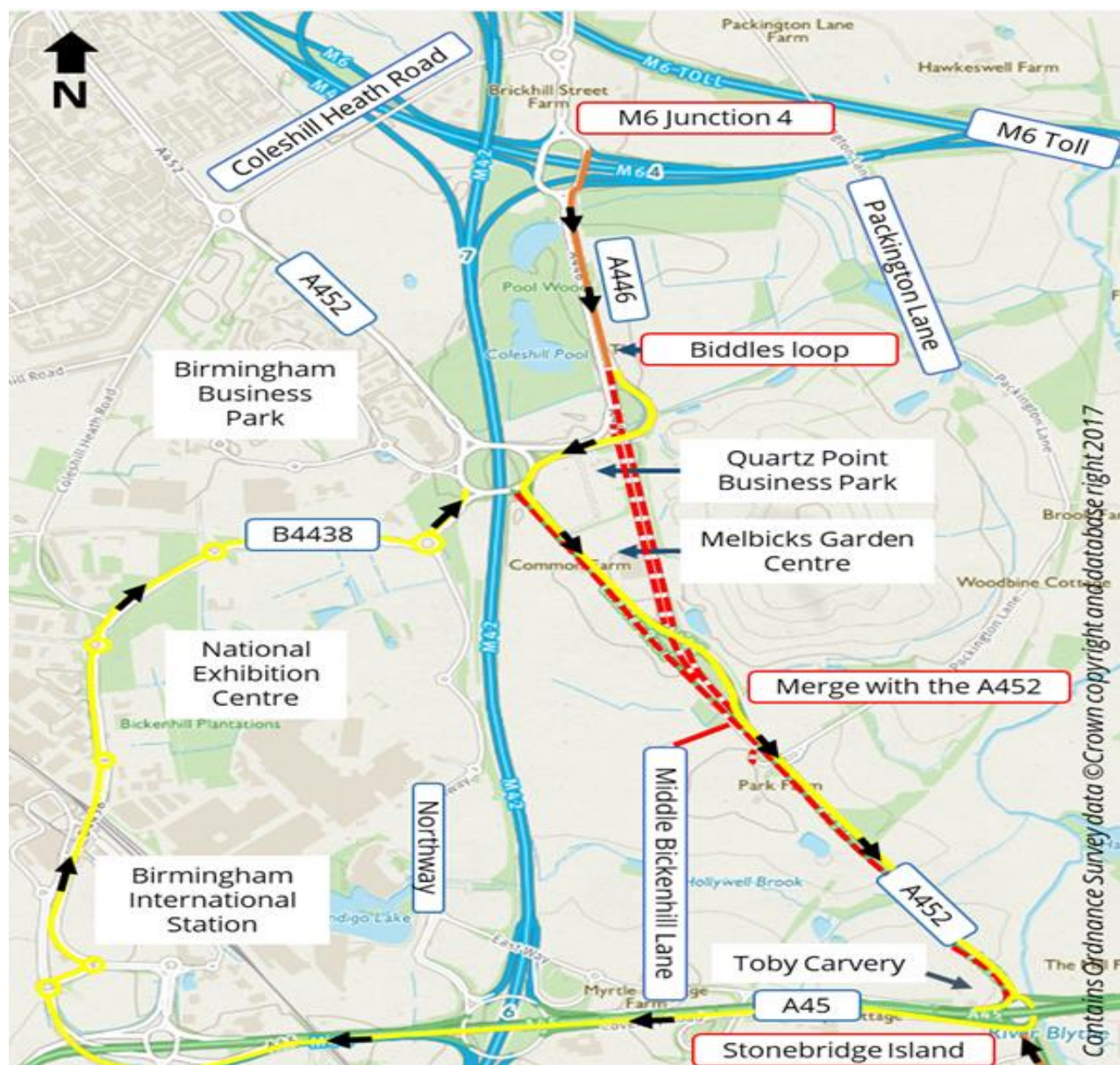


Sections of the A452 Chester Road (northbound) and A446 Stonebridge Road (northbound and southbound) between Stonebridge Island and M6 Junction 4 will be closed to traffic after evening rush hour on Friday 23 October 2020, and reopen before morning rush hour on Monday 26 October 2020. If work progresses faster than expected, the A452 and A446 will reopen earlier if possible.

Map key

- ⋯ = temporary road closures
- = permanent road closure
- = temporary lane closures
- = diversion routes
- = diversion route directions



Closures

- The A452 Chester Road (northbound) will be closed between Stonebridge Island and Biddles loop
- The A446 Stonebridge Road (southbound) will be closed between Biddles loop and the merge with the A452 southbound
- The A446 Stonebridge Road (northbound) will be closed between the diverge with the A452 northbound and the merge with the A452 at Biddles loop
- Packington Lane northbound will be closed at the merge with the A452 northbound. Access will remain to the A452 southbound
- Single lane closures will be in place southbound along the A446 Stonebridge Island from M6 Junction 4 to Biddles loop, and northbound along the A452 Kenilworth Road to Stonebridge Island

Diversion routes

- Northbound diversion from Stonebridge Island via the A45 (Coventry Road) and B4438 (Bickenhill Lane) towards Northway Island
- Southbound diversion via the A452 (Chester Road) towards Stonebridge Island