

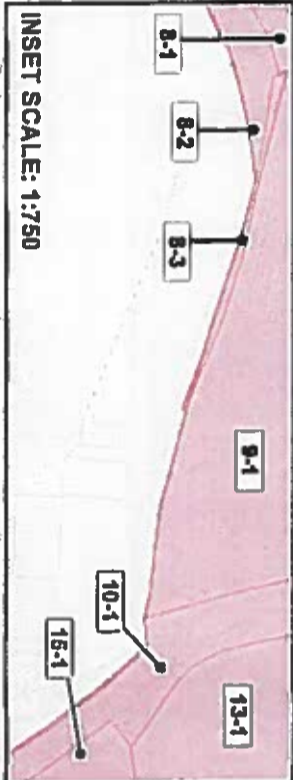
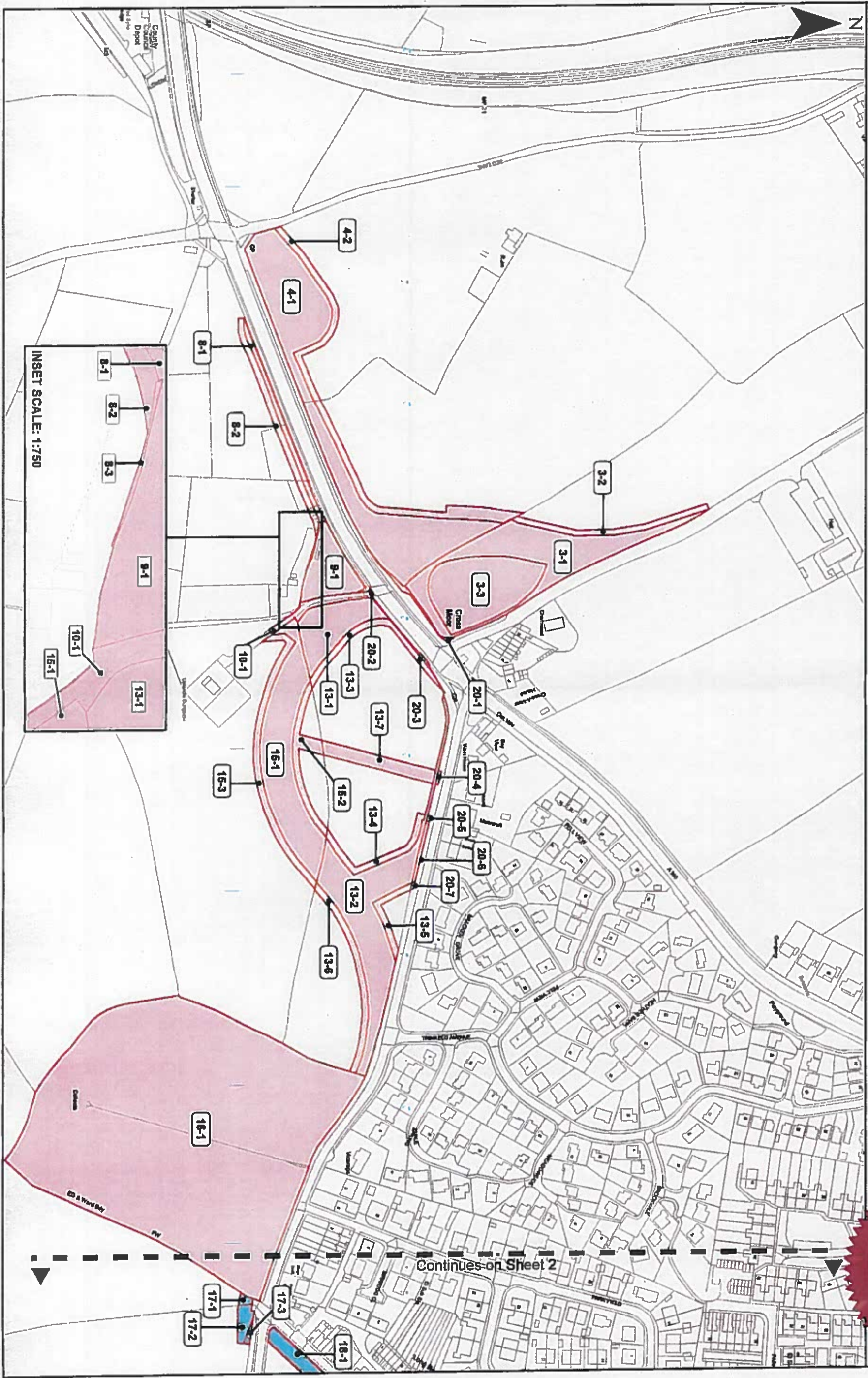
Copyright and database rights 2020 OS 100030849.
You are permitted to use this data solely to enable you to respond to, or interact with, the organisation that provided you with the data. You are not permitted to copy, sub-license, distribute or sell any of this data to third parties in any form.



Scale at A3: 1:2,500

MAP REFERRED TO IN
HIGHWAYS ENGLAND COMPANY LIMITED
IMPROVEMENT SCHEME)
(A590 TRUNK ROAD CROSS-A-MOOR
COMPULSORY PURCHASE ORDER 2021
1 of 2

THE COMMON SEAL OF
HIGHWAYS ENGLAND
has been affixed in
witness whereof
Dated 28/4 2021



INSET SCALE: 1:750

Continues on Sheet 2

Crown copyright and database rights 2020 OS 100000949
You are permitted to use this data solely to enable you to respond to, or interact with, the organisation that provided you with the data. You are not permitted to copy, sub-licence, distribute or sell any of this data to third parties in any form.



Scale at A3: 1:2,500

MAP REFERRED TO IN
HIGHWAYS ENGLAND COMPANY LIMITED
(A590 TRUNK ROAD CROSS-A-MOOR
IMPROVEMENT SCHEME)
COMPULSORY PURCHASE ORDER 2021
2 of 2

THE COMMON SEAL OF
HIGHWAYS ENGLAND
has been affixed in
the presence of
Authorised Officer
Dated 22/14 2021

