

## A12 junction 22 to 24 Concrete road improvements November newsletter

Highways England has started a long-term programme to renew or repair our concrete surface roads. These road surfaces were laid during the swinging sixties era of The Beatles and The Rolling Stones. Decades of use and hundreds of millions of journeys have left the roads in need of a vital upgrade.

Many of these roads are based in the east region. The first wave of concrete road repairs and maintenance projects are taking place on the following roads:

- A12 between junction 22 and 24, northbound and southbound (November 2020)
- M11 junction 9a to A11 Ickleton, northbound and southbound (November and December 2020)
- A12 junction 27 Spring Lane slip roads (early 2021)
- A14 junction 52 to 55, eastbound and westbound (early 2021)

### **Why this work is needed**

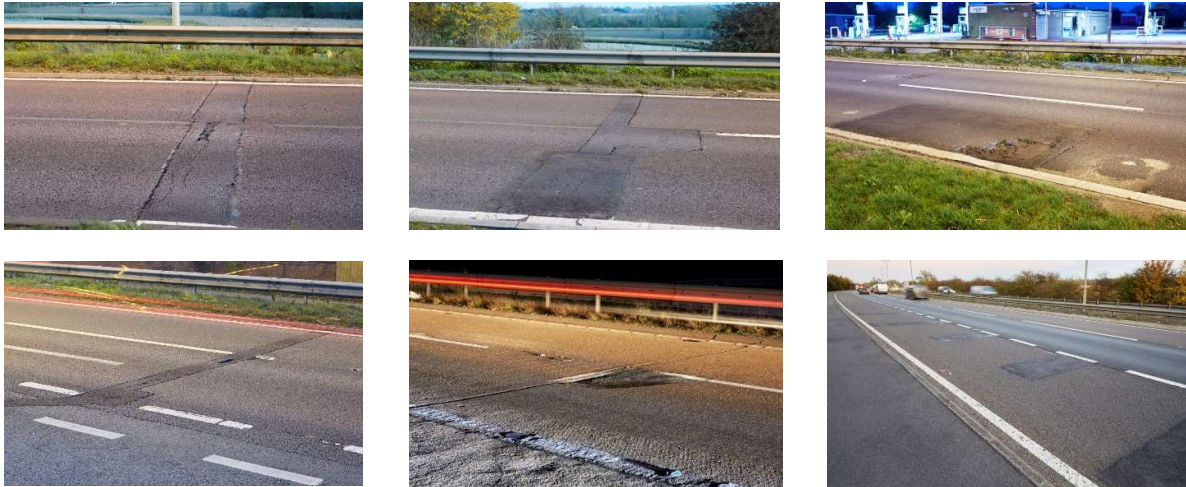
These roads have concrete surfaces which are now reaching the stage where they need to be repaired or replaced for safety reasons, and to make them less noisy and better to drive on.

After the replacements and repairs are completed, we aim to extend the lifespan of the roads by around 10 years, and make these roads easier to maintain in future.

## Our recent work on the A12

We started work to fix these additional defects and to carry out the repairs we'd already identified on the A12 northbound between junction 22 and junction 24 on Friday 6 November.

After the initial work was done, it became apparent that extra road repairs were needed. More than 2,500 road defects were found. Some of these are shown in the following photographs:



After the first weekend closure, a national lockdown was put in place by the government. With a quarter less traffic using the A12 road, we decided to reschedule our work to complete it in longer shifts so that we'd finish before the lockdown is lifted on 2 December. Closing the road from 8pm of Thursday through to 6am on Tuesdays was the equivalent of carrying out 26 night-time shifts.

These longer weekend road closures have helped save us a significant amount of time. So, instead of taking seven weekends, we've done the work in only four weeks. This will help motorists in Essex have better journeys in the lead up to Christmas. We'd like to thank motorists, businesses and residents for their patience during the road closures.

## What we've been doing

Re-surfacing work underway



Recently planed road surface



Force-drying the carriageway



High friction road surface being laid



Freshly-laid high friction road surface



New road surface



### Northbound repairs

During the first two weeks, a substantial amount of repair work was completed on the A12 northbound carriageway, including:

- laying over 1700m<sup>2</sup> of high friction surfacing
- filling and repairing over 2300 linear metres of cracks
- resurfacing over 10,800m<sup>2</sup> of carriageway
- carrying out over 40m<sup>2</sup> of partial and full-depth concrete repairs
- planed more than 2700m<sup>2</sup> of road surface
- preparing the installation of more than 480 road studs (cats' eyes)

### Southbound repairs

During the first A12 southbound road closure from Thursday 19 November to Tuesday 24 November, a significant amount of repair work was done, including:

- repairing 94 stud (cats' eyes) pockets

- resurfacing over 1500m<sup>2</sup> of carriageway
- carrying out full-depth concrete repairs on over 130m<sup>2</sup> of carriageway
- clearing 89 ditches, drains and gullies and replacing kerbs

## Next steps

This week we will do the final parts of the concrete surface repairs on the A12 between junctions 22 and 24.

To do our remaining work safely, we will need to close the road from junction 25 to 19 southbound from 8pm on Thursday 26 November through to 6am on Tuesday 1 December.

Over the course of the extended weekend, we plan to carry out the following repairs:

- repair over 400 road studs (cats' eyes)
- repair 1600m<sup>2</sup> of cracks
- replace over 75 m<sup>2</sup> of concrete bays
- carry out over 230m<sup>2</sup> of full-depth repairs
- carry out over 420m<sup>2</sup> of partial-depth repairs
- re-texture and plane over 2500m<sup>2</sup> of carriageway surface
- clear 25 ditches, drains and gullies

## Diversions

During the A12 southbound road closures, traffic will exit at junction 25 onto the A120; follow the A120; A131 and A130 to re-join the A12 at junction 19. For local diversion into Kelvedon traffic will exit at junction 25 onto the A120 then follow the B1024 into Kelvedon.

For the local diversion into Witham, traffic will exit at junction 25 onto the A120 then follow the B1018. HGVs and tall vehicles heading southbound will not be able to use the local diversions and should follow the A120, A131 and A130 due to low bridges.

Throughout the road closures we will continue to provide a vehicle recovery service along the diversion route, and traffic officers are on hand to help during peak periods.

## Keep in touch

You can keep up to date with the project by visiting: [www.highwaysengland.co.uk/A12-concrete](http://www.highwaysengland.co.uk/A12-concrete) or follow @HighwaysEAST on Twitter where regular updates will be available.