

Extreme Duty Motorhead



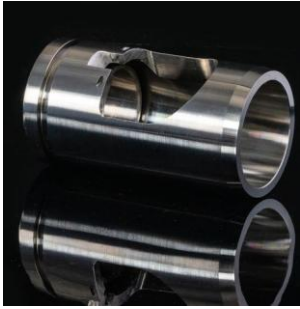
10,000 PSI RATED
ULTRA RELIABLE DESIGN
DTI UNIFIED FLAPPER DESIGN

Description

DTI's Extreme Duty Motorhead Assembly is a compact bottom hole assembly incorporating a Twin Flapper Check Valve, Release Joint and Circulation Sub. It is designed for operations where high shock loads, vibrations, tensile and/ or torque forces are expected. It is robust, reliable, easy to redress and rated to 10,000PSI.

The compact tool reduces the overall tool string length making it easier for wellsite handling and fitting in the lubricator. It is an extreme duty tool, suitable for use with Jars, Vibration Tools and High Torque Motors.

All DTI's motorheads use our single-piece flapper cartridge design – pioneered at DTI and now copied throughout the industry for ultimate reliability and reduced leak paths and easier redress.



Deployment and Operation

- All DTI's MHA's can be specified with a range of connections or metallurgy for a variety of applications.
- Two size drop balls to activate circulation mode and release mode.
- Burst disc option available as standard.

Features & Benefits

- Uses DTI pioneered single piece flapper cartridges for reduced leak paths and easier redress.
- Extreme Duty Release Joint mechanism will not accidentally release during Jarring and high vibration loads.
- High torque and tensile ratings
- No threaded shear screws in Release Joint eliminates chance of shear screws vibrating loose and reduces cost of redress
- Optional burst disc port in circulation sub



All Extreme Duty Motorheads are rated to 10,000 psi

Part Number	OD	ID	Release Ball	Circ. Ball	Tensile Rating	Thread	F/Neck
Extreme Duty Motorheads							
MHAX125AC32-1	1.250"	0.219"	0.375"	0.250"	30,000	1"-10 SA	1.25" GS
MHAX150AC08-1	1.500"	0.400"	0.375"	0.312"	44,000	1.00 AMMT	1.5" GS
MHAX169AC08-1	1.688"	0.400"	0.625"/0.500"	0.437"	48,000	1.00 AMMT	2.0" GS
MHAX175AC08-1	1.750"	0.400"	0.625"	0.437"	48,000	1.00 AMMT	2.0" GS
MHAX212AC09-1	2.125"	0.400"	0.625"	0.437"	80,000	1.50 AMMT	2.0" GS
MHAX288AC23-1	2.875"	0.781"	0.927"	0.812"	155,000	2-3/8 PAC	3.0" GS
MHAX312AC23-1	3.125"	0.781"	0.937"	0.812"	164,000	2-/8 PAC	3.0" GS
MHAX350AC68-1	3.500"	1.400"	1.562"	1.437"	208,000	2-3/8 IF	3.50" GS
MHAX375AC68-1	3.750"	0.906"	1.375"	1.000"	264,000	2-3/8 IF	3.50" GS

We offer optional equipment, alternative sizes, pressure ratings, materials and thread connections. **Please contact us for more information.**