



## NV75N7677RS Dual Cook Flex™ Oven

### Key features

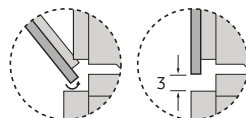
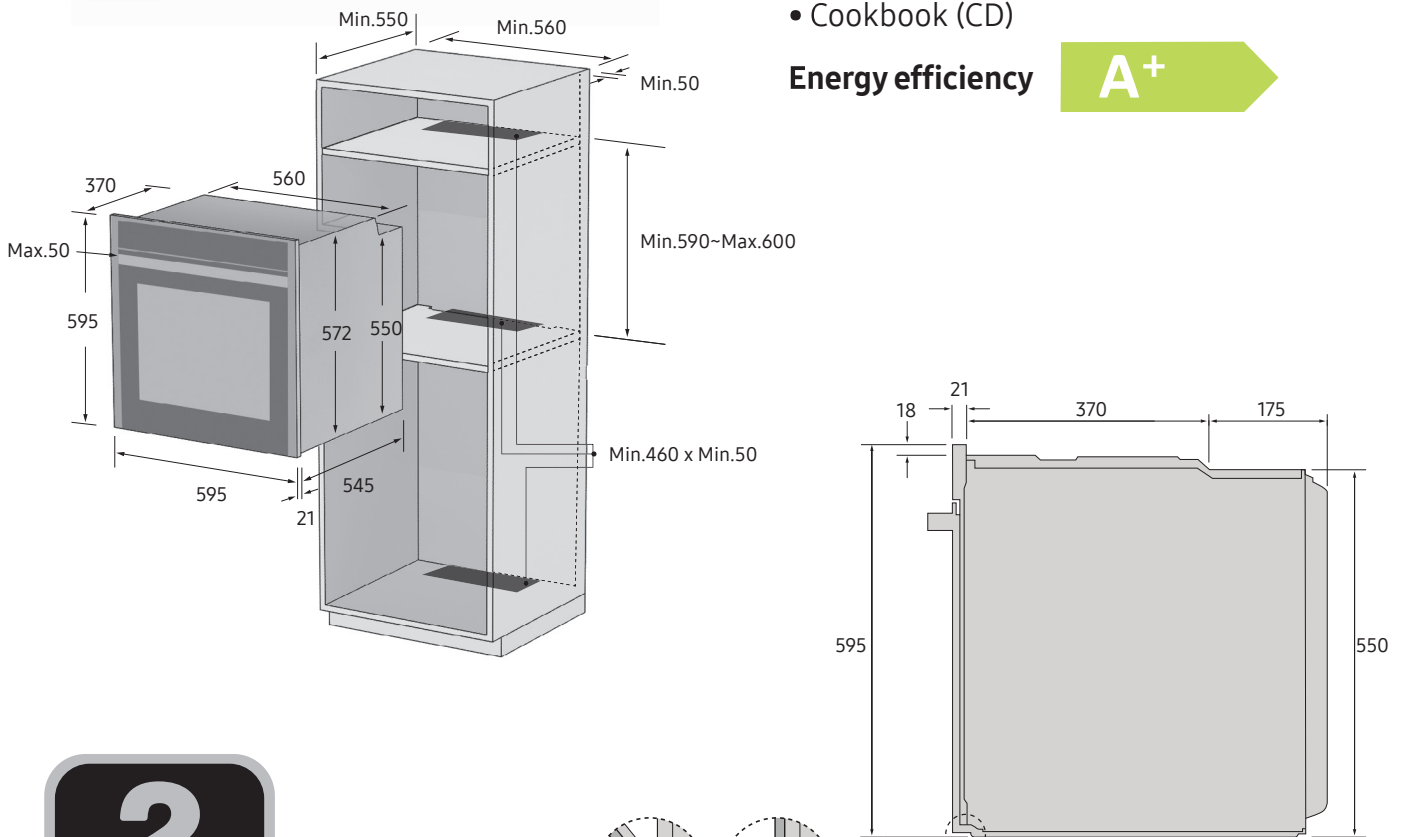
- Dual Cook
- Flexible Door
- WiFi Connection
- Intuitive & Easy LED Display Guide Lighting Control
- 75L Large & Useful Capacity
- Auto Cook 50 Recipes
- Pyrolytic Clean
- Steam Clean
- Child Safety Lock

### Included accessories

- Telescopic (1 Level)
- Rotisserie Spit (1 EA)
- Baking Tray (2 EA)
- Wire Rack (1 EA)
- Cookbook (CD)

### Energy efficiency

**A<sup>+</sup>**



Secure at least 3mm of gap so that the door opens and closes smoothly

# NV75N7677RS Dual Cook Flex™ Oven

Oven Features		
Energy Class		A+
Cavity Wall		Flat / Side Racks
Oven Colours		Stainless Steel
Door	Glass panes	Quadruple
	Opening	Drop Down
	Soft Closing Door	No
Interior Lamp (W)		25W / 40W (Halogen)
Interior Lights (Position)		Top / Side
Control	Control Panel Height	85mm
	Display	LED / Ice Blue
	Control Method	Pop-up Dial (with Touch Buttons)
	WiFi	Yes
Cleaning Method	Pyrolytic	Yes
	Catalytic	No
	Steam	Steam Cleaning
	Grill Heater	Fixed
Electric Features		
Temp Ranges	Single Convection	30~275°C
	Single Grill	100~300°C
	Upper or Lower	40~250°C
	Twin	40~250°C
Upper Grill (Small / Large)		1600W / 1100W
Bottom Heater		1100W
Convection (Upper / Lower)		1200W / 1200W
Input Power		3650~3950W
Over Voltage Protection		Yes
Cooking Modes		
Single Mode	Oven Modes	
	Conventional	30~275°C
	Convection	30~275°C
	Eco Convection	30~275°C
	Large Grill	100~300°C
	Eco Grill	100~300°C
	Fan Grill	No
	Bottom Heat + Convection	40~275°C
	Top Heat + Convection	40~275°C
	Bottom Heat	100~230°C
	Intensive Cook	No
	Pro-roasting	80~200°C
	Special Function	
	Vapour + Convection	No
	Vapour Top Heat + Convection	No
	Vapour Bottom Heat + Convection	No
	Steam Cook	No
	Steam Assist	No
	Keep Warm	40~100°C
	Plate Warm	30~80°C
	Defrost	No
	Prove Dough	No
	Slow Cook	No
	Drying	No
	Auto Cook Recipes	40 EA (Twin Mode 10 EA)
	Favourite (=Memory Cook)	No
Upper Mode	Convection	40~250°C
	Top Heat + Convection	40~250°C
	Large Grill	40~250°C
Lower Mode	Convection	40~250°C
	Bottom Heat	40~230°C
	Bottom Heat + Convection	40~250°C
	Steam Cook	No
	Steam Assist	No
Twin Mode	(Upper) Mode x (Lower) Mode	3 Mode x 3 Mode = 9 EA
Control Features		
	Clock	Yes
	Child Safety Lock	Yes
	Count Timer	Yes
	Cook Time	Yes
	End Time	Yes
	Language Option	No
	Sound	Yes
Equipment Supplied		
Accessory	Telescopic	1 Level
	Tray	Baking Tray 2 EA
	Rack	Wire Rack 1 EA
	Rotisserie Spit	Yes
	Meat Probe	No
	Cookbook (CD)	Yes
Application Dimensions		
Dimension (W x H x D)	Outside	595 x 595 x 570 mm
	Cutout	560 x 572 x 549 mm
	Shipping	694 x 660 x 660 mm
Capacity	Net Volume	75L
	Net Volume (Upper or Lower)	34 / 32L
Weight	Gross	53.7 Kg
	Net	49 Kg