

FIREPRO[®]

FIRE BARRIER

SLAB

Preventing the spread of fire and inhibiting the passage of smoke in concealed spaces



FIRE BARRIER SLAB

ROCKWOOL Fire Barrier Slab offers labour-saving solutions to prevent fire and inhibit the spread of smoke within roof and ceiling voids.





Advantages

- Simple, butt jointed and friction fit application
- No fixings, fasteners or angles required
- Suitable for closing voids of up to 1m in height and 20m in length
- Provides airborne sound reduction
- Service penetration data available
- Fire resistance of up to 4 hours integrity
- LUL approved in combination with ROCKWOOL LUL Intumescent Sealant

Description

ROCKWOOL Fire Barrier Slab comprises a high density stone wool core which is foil faced on both sides. Fire Barrier slab has been developed to prevent the spread of flames and inhibit heat and smoke through concealed spaces in buildings and improve sound reduction.

Applications

- Head of wall
- Concealed voids
- Service penetrations

Performance

Fire performance

Achieves 240min integrity; 60 min insulation without service penetrations. Where service penetrations are present Fire Barrier slab can achieve 90min integrity; 60min insulation dependent on service penetration type. For further information of specific service penetration details please contact ROCKWOOL Technical Support.

Acoustic performance

ROCKWOOL Fire Barrier Slab has been tested in accordance with BS EN ISO 10140-2:2010 achieving R_w 23dB. Test Report N° C/23667/T01.

Technical information

Standards and Approvals

Fire Barrier Slab has been independently tested and assessed to BS 476: Part 20 and Part 22 by accredited laboratories.

ROCKWOOL Fire Barrier system achieves a reaction to fire classification of A1 as defined in BS EN 13501:1

They are third party approved for performance and quality by the Loss Prevention Council Certification board (LPCB) and are listed in their Fire and Security 'Red Book' - certificate no. 022c/02.

The product has been authorised for use in LUL surface and sub-surface premises when installed in accordance with this data sheet - please refer to the LUL Approved Product Register website www.LU-apr.co.uk for specific details – LUL ref: 2231.

Product information

Thickness	Length	Width
100mm	1000mm	666mm



Installation

1. Fire Barrier Slab should be cut to the appropriate height and friction fitted within the opening.
2. ROCKWOOL Acoustic Intumescent Sealant or ROCKWOOL LUL Intumescent Sealant should then be applied to both the butt joints and perimeter of the barrier seal.

Service penetrations

ROCKWOOL Fire Barrier Slab can be penetrated by steel pipes of ≤ 33 mm external diameters and steel cable trays of ≤ 305 mm x 50mm.

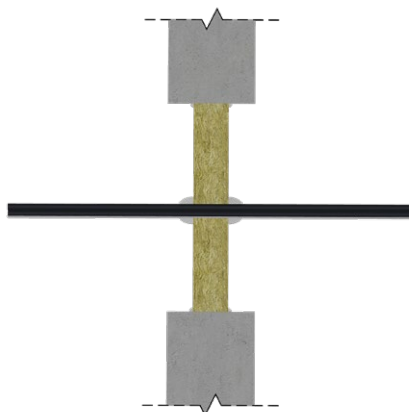
Penetrating services must be independently supported by a maximum of 150mm from the face of the slabs.

Handling

ROCKWOOL Fire Barrier slab is easy to handle. It is easy to cut to any shape. The product should be stored indoors or under a weatherproof covering.

Maintenance

Once installed ROCKWOOL Fire Barrier Slab should need no maintenance. Fire Barrier Slab should be inspected to ensure that they have not been disturbed during maintenance of areas and/or as part of a regular maintenance program.



Specification clauses

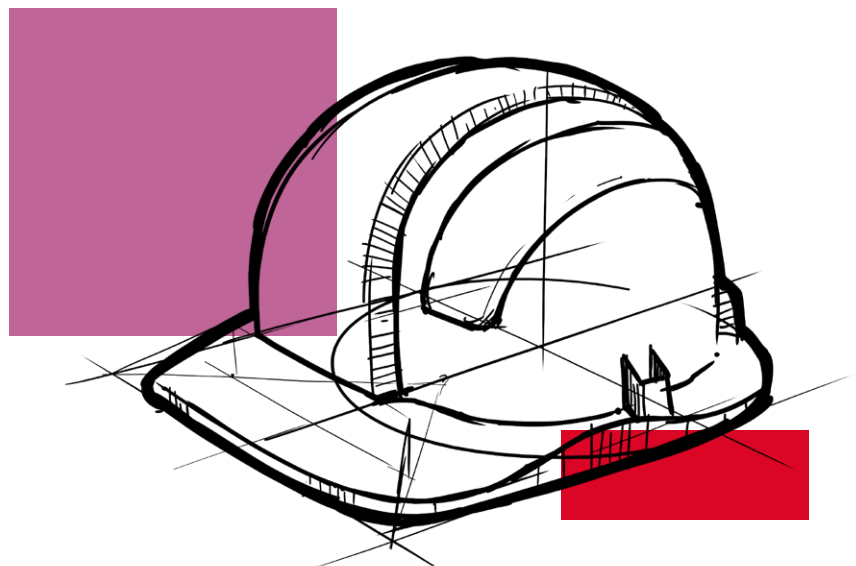
- ROCKWOOL Fire Barrier Slab is associated with the following NBS clauses:
- K10: Gypsum board dry linings/partitions/ceilings
 - 530 – Cavity fire barriers within partitions/wall linings
 - 545 – Cavity fire barriers within suspended ceilings
- K40: Demountable suspended ceilings
 - 287 – Cavity Barriers
 - 425 – Installing cavity barriers
 - 431 – Installing sound barriers
- P10: Sundry insulation/proofing work
 - 410 – Flexible cavity barriers
 - 430 – Wired mineral wool small cavity barriers
 - 440 – Fire protection

Disclaimers

This product should only be utilised for applications as outlined in the relevant ROCKWOOL product datasheet and in accordance with the relevant ROCKWOOL Fire Resistance Testing. Additionally, the product must be installed in accordance with the current ROCKWOOL guidelines. For further information please visit www.rockwool.co.uk or contact our Technical Solutions Team on 01656 868490.

Supporting Information

For further information relating to any aspect of the FirePro range, please refer to the applicable ROCKWOOL standard details at www.rockwool.co.uk or contact the ROCKWOOL technical solution team on 01656 868490 or technical.solutions@rockwool.co.uk.



Sustainability

As an environmentally conscious company, ROCKWOOL promotes the sustainable production and use of insulation and is committed to a continuous process of environmental improvement.

All ROCKWOOL products provide outstanding thermal protection as well as four added benefits:



Fire resistance



Acoustic comfort



Sustainable materials



Durability

Health & Safety

The safety of ROCKWOOL stone wool is confirmed by current UK and Republic of Ireland health & safety regulations and EU directive 97/69/EC: ROCKWOOL fibres are not classified as a possible human carcinogen.

A Material Safety Data Sheet is available and can be downloaded from www.rockwool.co.uk to assist in the preparation of risk assessments, as required by the Control of Substances Hazardous to Health Regulations (COSHH).

Environment

Made from a renewable and plentiful naturally occurring resource, ROCKWOOL insulation saves fuel costs and energy in use and relies on trapped air for its thermal properties.

ROCKWOOL insulation does not contain (and has never contained) gases that have ozone depletion potential (ODP) or global warming potential (GWP).

ROCKWOOL is approximately 97% recyclable. For waste ROCKWOOL material that may be generated during installation or at end of life, we are happy to discuss the individual requirements of contractors and users considering returning these materials to our factory for recycling.



Interested?

For further information, contact the Technical Solutions Team on 01656 868490 or email technical.solutions@rockwool.co.uk

Visit www.rockwool.co.uk to view our complete range of products and services.

Copyright ROCKWOOL April 2018.

April 2018

ROCKWOOL Limited

Pencoed
Bridgend
CF35 6NY

Tel: 01656 862 621
info@rockwool.co.uk
rockwool.co.uk

