

**YOUR CLOTHES DESERVE THE BEST CARE**

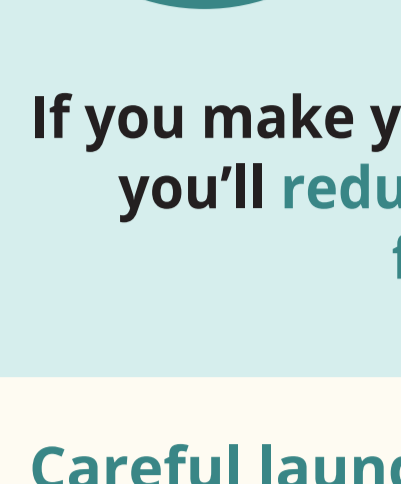
Don't let poor laundry care ruin your clothes. Make your wardrobe go the extra mile.



Most clothes are only worn **7** times before they are discarded



90% of our clothes are thrown away far too soon

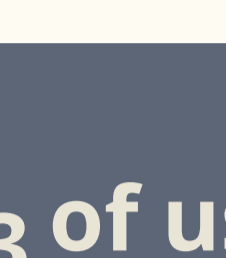


If you make your clothes last nine months longer, you'll reduce your carbon, water and waste footprints by up to 30%

Careful laundry care makes clothes last longer, saves money and the environment



**Denim**  
Wash with cold water infrequently



**Silk**  
Hand wash and never wring



**Linen**  
Dry naturally after a hot wash



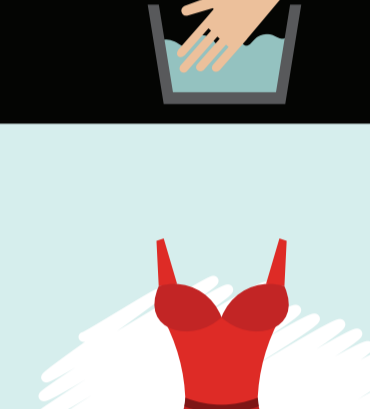
**1/3 of us spoil garments because we ignore the labels**



**WASH SYMBOL**  
Shows the maximum temperature and settings for cottons and synthetics



**HAND WASH ONLY**  
Wash by hand at a max of 40°C



**NOT SUITABLE FOR WASHING**



**TUMBLE DRY**  
Low heat setting



High heat setting



**DON'T TUMBLE DRY**



**Hand wash**

**Check the label**



Embellished Dresses



Delicates



Cashmere

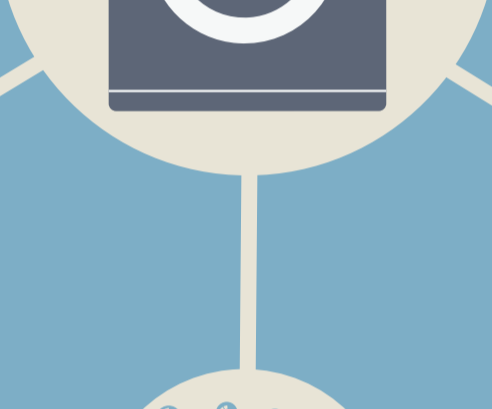
**Washing**



Wash similar items together

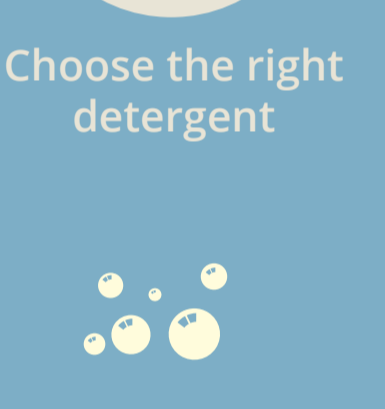


Select the correct programme



Don't over wash

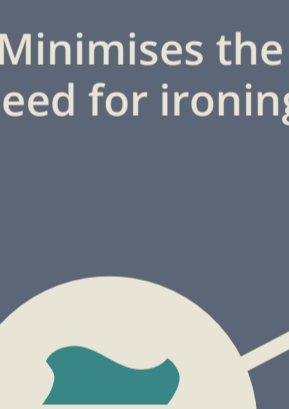
**Shorter cycles prevent bobbles**



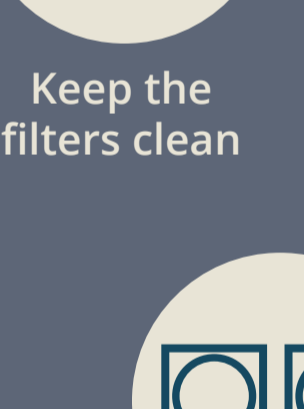
Choose the right detergent

**Avoid over filling your machine**

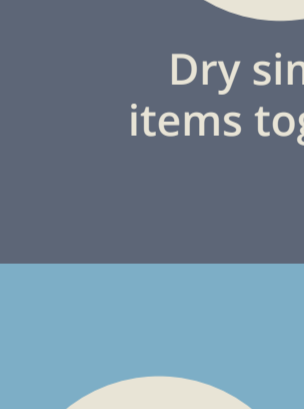
**Tumble Drying**



Minimises the need for ironing



Keep the filters clean



Dry similar items together



High temperatures can cause damage



Use correct setting to avoid shrinking



Don't tumble dry Mohair or Angora

**Ironing**



Wash and dry carefully for less ironing



Don't iron over zips and buttons



Use a high temperature for cotton



Iron fabrics with coolest setting first

**Care for the Environment**

Lower temperatures save energy



**Do you need to update your appliances?**

A modern washing machine could use up to **80% less energy** than one that's 5 years old



**Heat pumps recycle hot air**

They cost **50% less** to run than a conventional C-rated model

**Try washing at 30°**

**Your Clothes Deserve the Best Care**

The 7000 Laundry Series from AEG is designed to keep your clothes in tip top condition, while saving time and energy.

**Washing Machine**

**ProSteam Technology** allows you to complete a washing cycle with steam to reduce wrinkles, meaning less ironing.

**ProSense Technology** automatically adjusts time, water and energy consumption to suit any load size.

The **SoftPlus** option improves the dispersion of softener throughout the load and also adds an extra rinse to enhance softness.

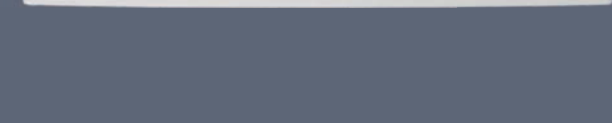


**Tumble Dryer**

**SensiDry Technology** dries the fabrics at half the temperature of conventional machines without extending the drying time.

**ProSense Technology** automatically adjusts time and energy consumption to suit any load size.

The **AntiCrease** option reduces creasing and cuts down on ironing time.



Produced by Euronics and AEG to promote the 7000 Series. [www.euronics.co.uk](http://www.euronics.co.uk)